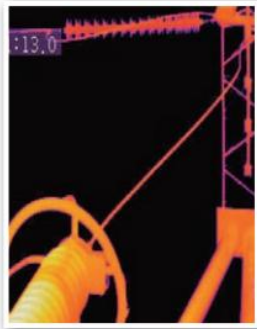
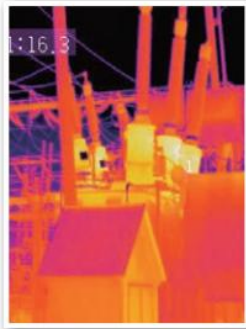


DT-890/891/892

Industrial Thermal Imagers



890(80x80), 891(120x90), 892(160x120) Thermal Imagers are designed to make your work easier, more productive and effective. 160x120 resolution at 50Hz for real-time capture; Temperature range from -20°C to 450°C (-4°F to 842°F). Hot/Cold spot marker automatically finds the hottest and coldest spots. It includes memory card, Lithium polymer battery & power supply, and USB cable. Bluetooth connectivity allows the Infrared Thermal Camera to send data to mobile devices.



EMC
EN: 61326-1
EN: 61010-1



Model: 890



Model: 892

| Specifications | | 890 | 891 | 892 |
|---------------------------------------|--|-------|--------|----------|
| Imaging and Optical Data | | | | |
| Field of View | | 21x21 | 21x21 | 31x23 |
| Spatial Resolution | 4.53mrad | | * | 3.33mrad |
| NETD | <0.1°C@30°C(80°F)/100mK | * | * | * |
| Image Frequency | 50Hz | * | 25Hz | * |
| Focus Mode | Focus free | * | * | * |
| Focal Plane Array(FPA)/Spectral Range | Uncooled microbolometer/8-14um | * | * | * |
| IR Resolution | | 80x80 | 120x90 | 160x120 |
| Image Presentation | | | | |
| Display | 2" TFT LCD, 240x320 pixels | * | * | * |
| Color Palettes | IRON | * | * | * |
| Measurement | | | | |
| Object Temperature Range | -20°C to 450°C (-4°F to 842°F) | * | * | * |
| Accuracy | ±2°C(±3.6°F) or ±2% of reading | * | * | * |
| Measurement Analysis | | | | |
| Spotmeter | Center Spot | * | * | * |
| Automatic Hot/Cold Detection | Auto hot or cold markers | * | * | * |
| Emissivity Correction | 8 pre-define level and Variable from 0.01 to 1.0 | * | * | * |
| Storage of Images | | * | * | * |
| Storage Media | 8 Gbytes Micro SD card | * | * | * |
| Image Storage format | Bitmap(BMP),including measurement data. | * | * | * |
| Data Communication Interfaces | | | | |
| Interfaces | USB-micro, Data transform between camera and PC | * | * | * |
| Bluetooth | | * | * | * |
| Power System | | | | |
| Battery | Li-ion battery, 8 hours operating time | * | * | * |
| Input Voltage | DC 5V | * | * | * |
| Charging System | In camera(AC adapter) | * | * | * |
| Power Management | Automatic shutdown | * | * | * |
| Environmental Data | | | | |
| Operating Temperature Range | -20°C to 50°C (-4°F to 122°F) | * | * | * |
| Storage Temperature Range | -40°C to 70°C (-40°F to 158°F) | * | * | * |
| Humidity(operating and storage) | 10% to 90% | * | * | * |
| Drop test | 2m | * | * | * |

Size(HxWxD): 180mm x 58mm x 70mm

Weight: 480g

Accessories: Battery, software
CD-ROM, Wrist strap, micro SD card, Adaptor,
USB cable, Gift box.

