

DT-9382W

AC/DC True RMS H&W analysis Clamp Meter



9382W AC/DC power quality True RMS clamp meter measure power and power factor, total harmonic distortion, individual harmonics, as well as AC/DC voltage, current, capacitance, inrush current analysis, and phase sequence. The low pass filter enables voltage and current measurements on variable frequency drives. It allows quick selection of the numerous measurement features on the large RGB display.

- Double molded plastic housing
- True RMS measurement for ACV & ACA
- Power and power factor harmonic distortion tester

- Fast response time
- True RMS

- TFT color LCD display
- PC Calibration



EMC & LVD
 EN: 61326
 EN: 61010-1
 EN: 61010-02-032
 EN: 61010-02-033



Meterbox Pro



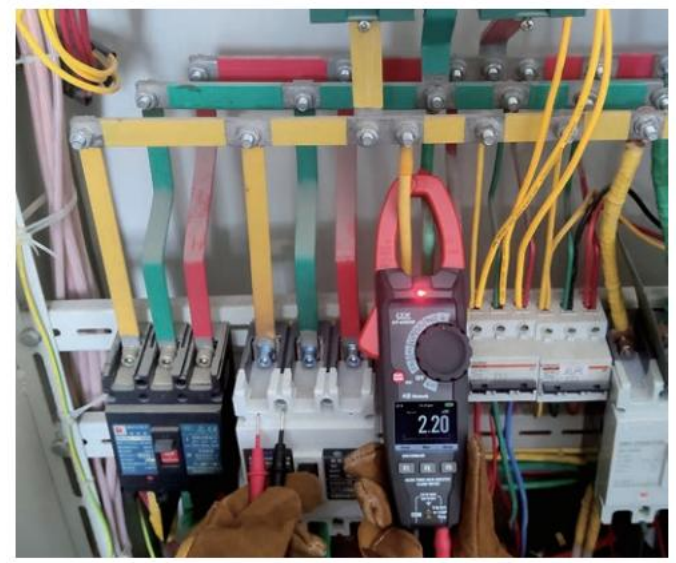
Model 9382W

Features

Current measurement
6000 Counts display
1.8" TFT color LCD
AC True RMS
Data Hold & Peak Hold
Max /Min Hold
REL (Zero) Function
Flashlight and Backlight
Auto Power Off
Low battery indication
100ms Inrush current
Low input impedance prevents false readings due to "ghost voltage" (LoZ)
Low pass filter for accurate measurement of variable frequency drive (VFD) signals
1.9" (48mm) Jaw opening
AC, AC+DC True RMS measurement & 1KHz ACV, ACA bandwidth
Logging function with Trend capture for easy review of logged data
Analyze and record harmonics in digital or graphical form
NCV Function
Bluetooth interface

Specifications

Function	Max Range	Basic Accuracy
AC True RMS Current	1000A	±(2.5%+8d)
DC Current	1000A	±(2.0%+5d)
DC Voltage	1000V	±(0.5%+2d)
AC True RMS Voltage	1000V	±(1.0% +5d)
Resistance	60.00MΩ	±(3.0%+5d)
Capacitance	100mF	±(2.5%+5d)
Frequency	10kHz	±(0.5%+2d)
Duty Cycle	0.5%~99.9%	+(1.2%+10d)
Temperature	-20°C~1000°C, -4 °F~1832°F	±(1.0%+3d)
Inrush Current	1000A	±(2.5%+2d)
Diode test	Forward DCA is approx. 1mA, open circuit Voltage MAX. 3V	
Continuity check	Buzzer sounds at 50Ω	
Voltage and Current Harmonics		
Harmonic order	DC	±(5.0%+20d)
Fundamental frequency (45Hz ~65Hz)	1~25	±(5.0%+10d)
	THD%	±(8.0%+10d)
Power		
DC Power	999.9KW	±(3.5%+5d)
Active AC Power	999.9KW	±(2.0%+5d)
Apparent AC Power	999.9KVA	±(2.0%+5d)
Active Energy AC	999.9KWh	±(2.0%+5d)
Power Factor	-1.0 ~ 0, 0 ~ 1.0	±(3% + 1d)



Size(HxWxD): 250mm x 78mm x 40mm **Weight:** 350g

Accessories: Test leads, gift box with carrying case, Temperature probe and 1.5V AAA x 3 batteries.