



DT-9871/9873/9873B/9875/9877/9885/9875Y/9885Y

High Performance Thermal Imagers



Model: 9885

CE
EMC
EN: 61326-1
EN: 61010-1

The Thermal Imager is designed for Non-contact detection and calculation of apparent surface temperature, and the thermal image creation is based on the temperature variation. Imager Thermometers provide fast and accurate readings for most surface temperature measurements with TFT color LCD display & Imager Video format. Built for tough work environments, these high-performance, fully radiometric imagers are ideal for troubleshooting electrical systems, electro-mechanical equipment, process equipment, HVAC/R equipment and others.

9875Y/9885Y, the measurement accuracy can reach $\pm 0.5^{\circ}\text{C}$ in the screening mode, the temperature screening range is $35^{\circ}\text{C}\sim 42^{\circ}\text{C}$, the system will automatically sound and color alarm when the surface temperature of the measured object reaches 37.3°C

Deploying this product in public places can automatically achieve temperature measurement for long distances, large areas, and large passenger flows.

Key features

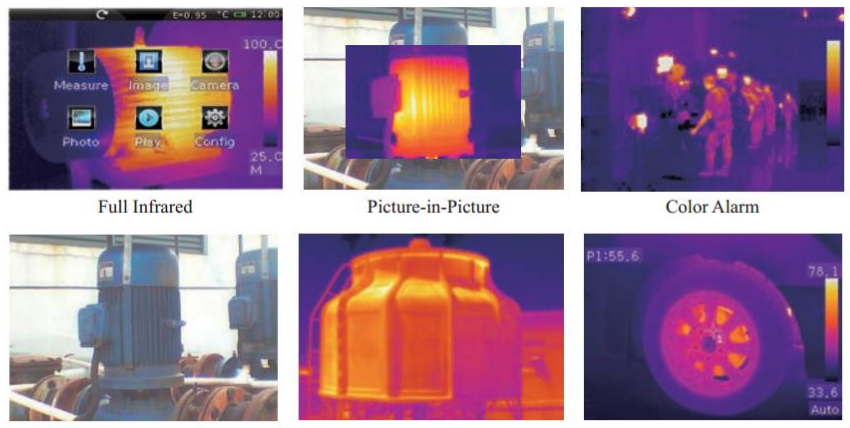
- 384x288 High Performance & high resolution Thermal Imager with TFT color LCD display (9885/9887)
- 160x120 High Performance Thermal Imager with high resolution TFT color LCD display (9873 Series)
- Professional IR-optical focus system ensures that images are in good focus for optimum image clarity and scanning convenience.
- Capture additional measurements fast and conveniently with wireless modules (9887 only)
- Meterbox analysis system—quickly identify and keep track of inspection locations by adding digital images of important information and surrounding areas
- Find problems faster and easier with accurately identify potential issues by combining digital and IR images
- Picture in Picture function Displays thermal image super-imposed over a digital image
- LED Flashlight allows the visual camera and fusion to be used in poorly lit environments
- Wide Temperature Range from -20 to $+400^{\circ}\text{C}$ targeting electrical and industrial applications
- $\pm 2\%$ Accuracy for reliable temperature measurement
- The image rotation has the ability to automatically rotate the active image
- Audio recorded with the video image acts a speaker to listen to audio recorded with the video image
- Capacitive touch screen is easier, productive and effective to operate it
- Lithium polymer Rechargeable Battery lasts >4 hrs continuous use; replaceable
- An easy-to-access thumbnail image gallery helps you to quickly review and find your thermal images.
- Area (Min/Max) mode shows the Minimum or the Maximum Temperature reading in the selected area
- A conveniently located button activates the laser pointer that will help you associate the hot or cold spot in the thermal image with the real physical target in the field.
- In order to adapt the device to every situation, both wide angle and tele-lenses are available.
- Equipped with standard video, USB outputs as well as a removable SD card.
- The IR video can be streamed to a PC via USB or wifi (DT-9887 only).



Wi-Fi

Wi-Fi Connectivity/

Model: 9875



Full visible light



Thermal Imager with Rapid Surface Temperature Screening

- 37.3°C high temperature automatic alarm prompt
- 50Hz Image frame rate
- Infrared lens Resolution: 384x288 pixels (9885Y)