

T-50F/55/60F/65F/68

Portable thermal camera



The 3.5" 640x480 touchscreen LCD offers Auto Fusion function to blend a visible image with an infrared image to more easily locate problems. It can scan the asset's QR code or barcode, help classifying the thermal images into predefined folders. with WiFi function, you can transfer realtime thermal video or images to the smart phone, easily analyse, report and share.



EMC
EN: 61326-1
EN: 61010-1

Specifications	T-50F	T-60F	T-55	T-65F	T-68
IR resolution	120x90	160x120	206x156	256x192	320x240
Image frequency	25Hz	25Hz	9Hz	25Hz	9Hz
Pixel size	17µm	17µm	12µm	17µm	12µm
Field of view (FOV) / Minimum focus distance	50°x38°/0.5m	34°x23°/0.5m	36°x23°/0.5m	80°x60°/0.5m	36°x23°/0.5m
Object temperature range	-20°C to 150°C (-4°F to 302°F) 0°C to 400°C (32°F to 752°F)	-20°C to 150°C (-4°F to 302°F) 0°C to 400°C (32°F to 752°F)	-20°C to 330°C (-4°F to 626°F)	-20°C to 400°C (-4°F to 752°F)	-20°C to 330°C (-4°F to 626°F)
Built-in digital camera	2M				
Display	3.5" 640x480 Capacitive touch screen				
Image modes	IR image, Visual image, Picture in picture, Auto fusion				
Color palettes	Iron, Rainbow, Grey, Grey Inverted, Brown, Blue-red, hot-cold, Feather, Above alarm, Below alarm, Zone alarm,				
Spot	Center Spot, Three manual spots				
Automatic hot/cold detection	Auto hot or cold markers				
Area	Three areas analyse				
Storage media	3.4GB internal EMMC				
Video storage format	Standard MPEG-4 encode, 640x480@30fps, on memory card				
Image storage format	Standard JPEG, or HIR files including measurement data, on memory card >6000 pictures				
Interfaces	USB type-C				
Wifi	802.11, transfer images and realtime video stream.				
Battery	Li-ion battery, 4 hours operating time				

Model T-50F



QR Code Scan



640x480 3.5" capacitive touch screen



Auto Fusion mode (AUF)



160x120 focal plane array (FPA)



Wi-Fi Connectivity



IP54

Size(HxWxD): 80 x 52 x 18mm

Weight: 130g

Accessories: USB cable, Gift box.



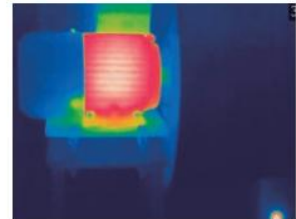
Electrical inspection



Building inspection



Wilderness exploration



Industrial inspection