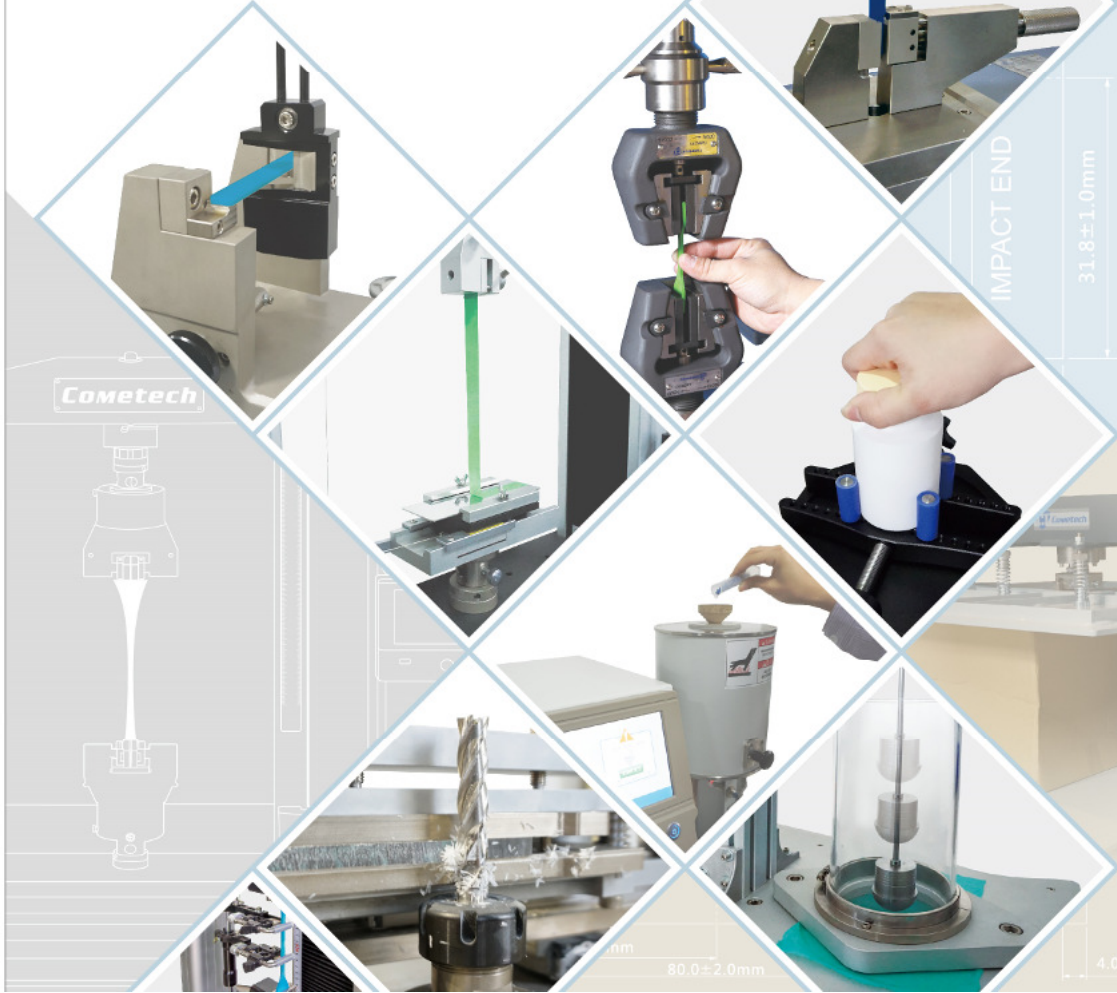
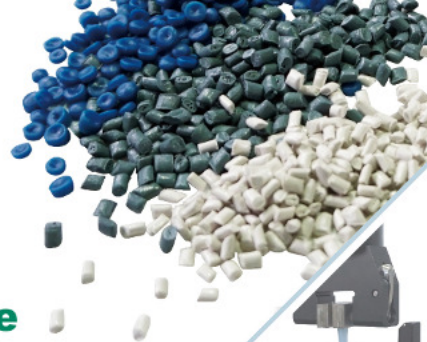




# Plastic & Rubber & Package Testing Machine

橡塑膠 & 包裝測試 



# Universal Testing Machine

萬能材料試驗機



## QC-503M1F/M2F

Universal Testing Machine  
萬能材料試驗機

Capacity	100kN
Force resolution	31bits
Force precision	1/100,000
Stroke	1100mm (w/o grips)
Columns	550mm
Max. speed	375mm/min
PC-port	RJ 45 (TCP/IP)
Moror type	Servo motor
Dimension	1200 x 600 x 2200 mm



## QC-508M1F/M2F

Universal Testing Machine  
萬能材料試驗機

Capacity	5kN
Force resolution	31bits
Force precision	1/100,000
Stroke	800mm (w/o grips)
Cantilever distance	70mm
Max. speed	1000mm/min
PC-port	RJ 45 (TCP/IP)
Moror type	Servo motor
Dimension	500 x 520 x 1450 mm



## Temperature Type Universal Testing Machine

溫度型材料試驗機

Capacity	100N~100kN
Stroke	200mm(w/o grips)
Inner size	200x200~500x500mm
Temperature	high : 25° ~ 300° low : -60° ~ +100°

\*Related accessories will be planned with customer's needs



## QC-505M1F/M2F

Universal Testing Machine  
萬能材料試驗機

Capacity	50kN
Force Resolution	31bits
Force precision	1/100,000
Stroke	1100mm (w/o grips)
Columns	420mm
Max. speed	600mm/min
PC-port	RJ 45 (TCP/IP)
Moror type	Servo motor
Dimension	900 x 600 x 1950 mm



## QC-508D1

Universal Testing Machine  
萬能材料試驗機

Capacity	5kN
Force resolution	23bits
Force precision	1/10,000
Stroke	800mm (w/o grips)
Cantilever distance	70mm
Max. speed	600mm/min
PC-port	RJ 45 (TCP/IP)
Moror type	DC motor
Dimension	500 x 520 x 1450 mm



## QC-551

Extensometer

兩點延伸器

Test stroke	700/1100mm
Resolution	0.025mm
Gauge length	20,25,30,50 (Can be customized)
Thickness of specimen	0.2~6mm

\*Suitable for the material elongation higher than 20%



## QC-506M1F/M2F

Universal Testing Machine  
萬能材料試驗機

Capacity	20kN
Force resolution	31bits
Force precision	1/100,000
Stroke	800mm/1200mm (w/o grips)
Columns	425mm
Max. speed	830 mm/min
PC-port	RJ 45 (TCP/IP)
Moror type	Servo motor
Dimension	950 x 580 x 1510 mm



## QC-528M1F

Universal Testing Machine  
萬能材料試驗機

Capacity	500N
Force resolution	31bits
Force precision	1/100,000
Stroke	400mm (w/o grips)
Cantilever distance	55mm
Max. speed	600mm/min
PC-port	RJ 45 (TCP/IP)
Moror type	Step motor
Dimension	475 x 285 x 825 mm



## QC-557

Short Extensometer  
金屬短延伸器

Gauge length	25mm/50mm
Resolution	0.0005mm
Elongation	100%(25mm)/50%(50mm)
Specimen thickness	0~20mm



# Plastic & Rubber

## 橡膠測試



### QC-603

Manual Specimen Punch  
手動試片裁切機

Material	Rubber, soft plastic and leather, etc.
Pressing board area	70×150mm
Dimension	42 × 42 × 75 cm



### QC-603A

Pneumatic Specimen Punch  
氣動式試片裁切機

Material	Rubber, soft plastic, leather
Compression platen size	Upper platen Ø145 mm Lower platen 260 x 230 mm
Stroke	100 mm
Power supply	Pneumatic: 3~6kg/cm <sup>2</sup>
Output force	900kg
Dimension	35 × 43 × 69 cm

### QC-603C

Air Hydraulic Specimen Punch  
空油壓試片裁切機

Material	Rigid plastic, fabric
Compression platen size	Upper platen 35x16cm Lower platen 35x18cm
Pressure stroke	20 mm
Power supply	Pneumatic: 3~6kg/cm <sup>2</sup>
Output force	3000kg
Dimension	40 × 38 × 107 cm



### QC-603I

Hardness Specimen Cutting Device  
硬質試片裁切機

Material	Hardness of polymer specimen
Speed range	150~3500RPM
Specimen thickness	2 ~ 15 mm
Minimum cutting angle	R = 6 mm
Dimension	47 × 40 × 59 cm

### QC-643

Stiffness Tester  
挺度試驗機

Max. capacity	500g
Test angle	1~90° adjustable
Test length	1 · 5 · 10 · 15 · 20 · 25 · 50mm
Speed	5° ~ 100°/sec
Dimension	40 × 35 × 32 cm



### QC-639S/T

Digital Impact Testing Machine  
電子式衝擊試驗機

Model	QC-639S	QC-639T
Test type	IZOD/CHARPY	
Impact angle	150°	
Test capacity	Izod 1J~11J	Izod 1J~25J Charpy 1J~11J Charpy 1J~25J
	Best accurate range: 20~80% of the full capacity.	
Dimension	90×30×76cm	90×38×76cm



### QC-640

V-shape Notcher  
衝擊試片切角機

Cutting speed	30-550m/min
Notch angle	45° ( or indicated )
Specimen size	Thickness 3 ~ 13 mm Height 10 ~ 13mm
Specimen length	14 cm ( max. )
Dimension	48 × 37 × 35 cm



### QC-639C/D

Mechanical Impact Tester  
萬能衝擊試驗機

Model	QC-639C	QC-639D
Test type	IZOD/CHARPY	
Impact angle	150°	
Test capacity	Izod 1J~11J	Izod 1J~25J Charpy 1J~11J Charpy 1J~25J
	Best accurate range: 20~80% of the full capacity.	
Dimension	90×30×70cm	95×38×76cm

### QC-639P/Q

Computerized Impact Tester  
電腦式衝擊試驗機

Model	QC-639P	QC-639Q
Test type	IZOD/CHARPY	
Test capacity	Izod 1J~11J	Izod 1J~50J Charpy 1J~11J Charpy 1J~50J
	Best accurate range: 20~80% of the full capacity.	
Minimum display angle	0.05°	
Impact angle	150°	
Dimension	96×42×75cm	110×50×105cm



### QC-GF-300

Gravity Meter  
比重天平

Weighing range	0~310g
Minimum weighing value	0.001g
Dimension	44 × 32 × 27 cm
	Include one set of gravity shelf and windproof cover



# Plastic & Rubber

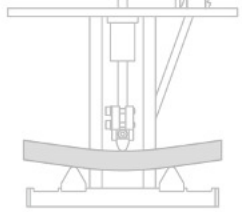
## 橡膠測試



### QC-654

Heat Deflection Tester  
加熱變形試驗機

Use temperature	Room temperature ~ 300°
Temperature control	Rise speed 2°C/min
Deformation	0.01~10mm
Span	100mm(Max.)
Test quantity	1,2,3,6 sets

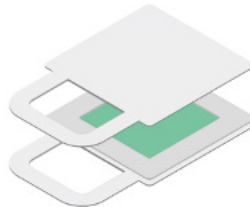


### QC-656A

Digital Heat Deflection Tester  
電子式加熱變形試驗機

Use temperature	Room temperature ~ 300°
Temperature control	Rise speed 2 °c/min
Deformation	0.001~10mm
Span	64mm/100mm
Test quantity	6 sets

\*Real time temperature and deformation.  
\*Complete test automatically.



### QC-677A

Manual Thermos Press Forming Machine  
手動熱壓成型機

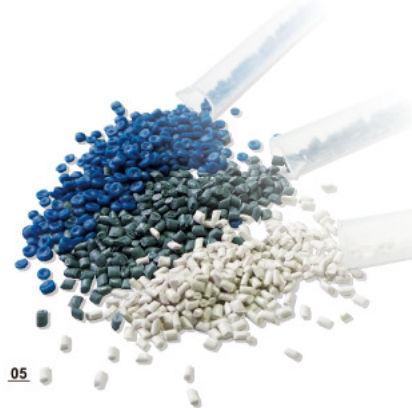
Pressure	10T   20T   30T   50T
Temperature	Room temperature ~300°C
Heating time	50°C to 150°C takes 18 mins
Cooling time	150°C to 60°C takes 10 mins
Size of heating plate	25x25cm(or designated)
Dimension	53 × 62 × 145 cm



### QC-674

Electricity Programmable Forming Machine  
可程式熱壓成型機

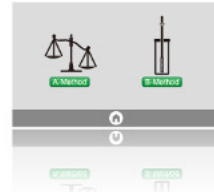
Pressure	10T   20T   30T   50T
Temperature	Room temperature ~300°C
Heating time	50°C to 150°C takes 18 mins
Cooling time	150°C to 60°C takes 10 mins
Size of heating plate	30x30cm(or designated)
Dimension	128 × 74 × 152 cm



### QC-652S

Melt Flow Index Tester  
熔融指數試驗機

Use temperature	50° ~ 360°
Test method	MFR/MVR
Hole mold	2.095±0.005
Counter weight	1100g、2060g、3700g、 4900g Optional
Dimension	29 × 51 × 46 cm



### QC-607

Aging Oven  
老化試驗機

Model	M	L
Temperature	40°C~ 200°C	
Control method	Electric digital temperature controller	
Heat method	Hot air recycling	
Dimension	74×64×118cm	80×70×130cm



### QC-605

Drying Oven  
烘箱

Model	M	L
Temperature	40°C~200°C	
Control method	Electric digital temperature controller	
Heat method	Hot air recycling	
Dimension	74×64×118cm	100×70×115cm



### QC-609A

Discoloration Meter  
耐黃變試驗機

Temperature	5°C~260(Normally 50°C)
Control method	Electric digital temperature controller
Heat method	Hot air recycling
Dimension	93 × 58 × 117 cm



### QC-631

Compression & Deformation Tester  
永久壓縮歪度試驗機

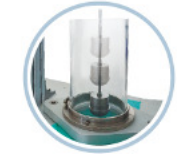
Specimen Dimension	28.68×12.7mm (rubber) 50×50×25mm (H)(foam plastic)
Material	SUS 304 stainless steel
Size of interval rings	5.0, 7.62, 8.89, 9.52, 10.16 mm are available (10 interval rings of the same size will be offering for free)
Dimension	20 x 10 x 12 cm



### QC-633A

Drop Dart Tester  
薄膜衝擊試驗機

Model	A	B
Falling height	66cm	152.4cm
Dart diameter	Ø38.1mm	Ø50.8mm
Dart material	FRP	Stainless steel
Weight	1995g	2010g
Dimension	43 x 56 x 218 cm	



### QC-637B

Dropping Impact Tester  
落球衝擊試驗機

Testing height	5~200 cm
Dropping ball control	Controlled by electromagnetic
Weight of steel ball	500g x 1, 1000g x 1 (or indicated)
Base plate	42 X 29 cm (or indicated)
Dimension	46 × 46 × 215 cm



### QC-701A

Super Daylight  
標準多光源對色箱

Inner chamber	67×37×35 cm
Light source	D65 TL84CWF A UV
Timer	5sets
Dimension	72 x 42 x 58 cm

\*Suggestion: Replacing light tube when reach 1000 hours.



# Plastic & Rubber

## 橡塑膠測試



### QC-618A

DIN Abrasion Tester  
DIN 磨耗試驗機

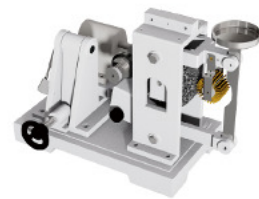
Sample size	Diameter:16mm Height:6~16mm
Drum	Diameter:150 mm, Perimeter:471mm, Rotary speed:40PRM
Sand paper Dimension	#60 or indicated 81 × 32 × 36 cm



### QC-619K

TABER Abrasion Tester  
TABER磨耗試驗機

Grinding wheel	Diameter 2 inch Thickness 1/2 inch
Disk rotary speed	1~100 rpm (adjustable)
Sample size	Diameter: Ø110mm, Center hole Ø7.5mm, Thickness: 1 ~ 6mm
Dimension	55 × 38 × 47 cm



### QC-615A

AKRON Abrasion Tester  
AKRON 磨耗試驗機

Weights	2 LB and 6 LB
Testing angle	15° (adjustable)
Grinding wheel	# 36
Diameter of grinding wheel	Ø150 mm
Dimension	65 × 45 × 45 cm



### QC-621H

Surface Hardness Abrasion Tester  
表面硬度磨耗機

Abrasion distance	10 ~ 100 mm
Sample size	Width 20 ~ 200 mm, thickness max. 50 mm
Control panel	1 ~ 120 CPM 1 ~ 99,999,999 times
Abrasion head grip	Sand paper · cotton · steel wool · other
Dimension	70 × 35 × 40 cm



### GS Series

Hardness Tester  
硬度計

Model	Type	Application	Indentor	Load
GS-701N	Shore C	Foam(PU)	Ball	1kg
GS-702N	Shore D	Hard plastic	Needle	5kg
GS-709N	Shore A	Normal rubber	Needle	1kg

### QC-GS

Fixed-pressure Load Stand  
定壓荷重台

Loading weight	1kg, 5kg (1+4kg)
Feature	Specimen height adjustable
Dimension	18 × 20 × 42 cm



### QC-SM

Thickness Gauge  
厚度計

Model	Reading (mm)	Depth (mm)	Load (N)
SM-112	0.01~10.0	26	2.5
SM-114	0.01~10.0	120	2.5
SM-150	0.01~10.0	400	2.5
SM-1201	0.001~1.00	30	1.5

# Package Testing Machine

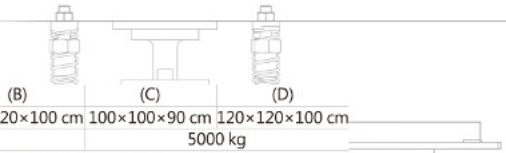
## 包裝測試



### QC-121M1F

Box Compression Tester  
紙箱抗壓試驗機

Model	(A)	(B)	(C)	(D)
Test space capacity	100×100×90 cm	120×120×100 cm	100×100×90 cm	120×120×100 cm
	2000 kg		5000 kg	
Max speed	0.0001 ~ 200mm/min			
Dimension	159×100×170cm	179×120×176cm	159×100×170cm	179×120×176cm
Weight	800 kg	900 kg	850 kg	950 kg



### QC-113A

Pneumatic Type Drop Tester  
氣壓式落下試驗機

Testing height	30~130 cm(200cm)
Moving speed	2000 mm/min
Sample plate	27 × 47cm (W × D)
Max. load	Approx. 60kg
Max.sample size	80 × 80 × 80cm
Dimension	85×150×230 cm



### QC-116

Digital Bursting Strength Tester  
破裂強度試驗機

Model	High pressure	Low pressure	Textile
Pressurization Speed(ml/min)	170±15	95±5	98±4
Upper plate(mm)	Ø31.5±0.05	Ø30.5±0.05	Ø30.5±0.05
Lower plate(mm)	Ø31.5±0.05	Ø33.1±0.05	Ø30.5±0.05
Max.force	75kg/cm2		
Dimension	53 × 33 × 58 cm		



### QC-117A

Motor Coefficient of Friction Tester  
電動靜摩擦試驗機

Specimen size	120 x 300mm(Max.)
Weight size	Ø90 x 100 about 1300g(srandard)
Test angle range	0~60°



### QC-117

Coefficient of Friction Tester  
靜摩擦試驗機

Specimen size	120 x 300mm(Max.)
Weight size	Ø50 x 45 about 700g(srandard)
Test angle range	0~45°



### QC-PS1

Cutters for Circular Sample  
圓形樣品切割器

Sample area	100 cm <sup>2</sup>
Sample diameter	Φ113 mm
Cutting thickness	Around 5 mm
Dimension	17x17x13mm

# Package Testing Machine

## 包裝測試



### QC-801

Tape Holding Power Tester (Normal Type)  
常溫型膠帶保持力試驗機

Model	801
Testing jigs	10 sets
Weights	1kg x 10pcs
Timer	99999.9 minutes
Dimension	93 x 26 x 62 cm



### QC-802A

Tape Holding Power Tester (Heating Type)  
烘箱型膠帶保持力試驗機

Temperature	Room temperature~200°C
Testing jigs	10 sets
Weights	1kg x 10pcs (or other specification)
Timer	99999.9 minutes
Dimension	100 x 50 x 92 cm



### QC-803A

Manual Roller Tester  
手持式輻壓滾輪

Weight of roller	4.5LB
Speed of roller	Control by hand
Width of roller	45mm
Diameter of roller	95mm
Dimension	13 x 22 x 8 cm



### QC-803J

Motor Type Roller  
電動式輻壓滾輪

Weight of roller	4.5LB (two roller use in same time)
Speed of roller	50 ~ 600mm/min(adjustable)
Width of roller	45mm
Diameter of roller	95mm
Dimension	62 x 36 x 31 cm



### QC-507M1F

Universal Testing Machine Horizontal Type  
臥式拉力機

Capacity	100N
Stroke	300mm
Max. speed	600mm/min
PC-port	RJ 45 (TCP/IP)
Motor type	Step motor
Dimension	92 x 30 x 38cm



### QC-PP&PPI

Force Gauge(mechanical / electronic)  
拉壓力計

	Digital	Mechanical
Capacity	1-50kg	5,10,20,30,50kg (optional)
Accuracy	±0.2%	0.5%
Unit	N,kgf,(gf),lbf	N,kgf(optional)



### QC-805

Tape Initial Adhesion Tester(1 set)  
單組式膠帶初黏性試驗機

Test angle	0° ~ 40° Adjustable
Ru-up distance	100mm
Accessory	With No. 2~32 steel ball, one set
Dimension	60 x 20 x 49 cm



### QC-805A

Tape Initial Adhesion Tester(4 set)  
四組式膠帶初黏性試驗機

Test angle	20° ~ 40° Adjustable
Ru-up distance	100mm
Accessory	With No. 2~32 steel ball, four set
Dimension	55 x 30 x 30 cm



### QC-805P

PSTC Tape Initial Adhesion  
PSTC式膠帶初黏性試驗機

Slope angle	21.3°
Ball diameter	Φ7/16 inch x 3
	Φ7/32 inch x 5
Slope length	6.5 inch
Dimension	23 x 6 x 7 cm



### QC-104

MIT Folding Endurance Tester  
耐折強度試驗機

Bending angle	+135° ~ -135°
Bending speed	175±25CPM
Angle radius(R)	0.38/0.5/0.8/1.0/2.0/3.5
Grip interval(T)	0.25/0.5/0.75/1.0/1.25mm
Specimen tension	50~2000g
Gap between grips	70 mm
Dimension	63 x 44 x 46 cm

### QC-807

Film Bar Cutter  
薄膜長條切割器

Specime cutter width	1 inch or indicated width
Cutting thickness	0.05~1mm
Suitable material	Paper,plastic film,film



### QT-010

Closure Torque Tester  
手動瓶蓋扭力機

Measurement range	0~10N-m,0~100kgf-cm, 0~90in.lb
Display resolution	0.001N-m,0.001kgf-cm, 0.01in.lb
Container diameter	Φ10 ~ 190 mm
Dimension	45 x 19 x 13.6 cm





COMETECH TESTING MACHINES CO.,LTD.



廣 鍊 儀 器 股 份 有 限 公 司

No. 49, Ln. 39, Liancun Rd., Fengyuan Dist, Taichung City, 42082 Taiwan  
台中市豐原區鎌村路39巷49號

Tel:+886-4-25368881 / Fax:+886-4-25368883  
E-mail: sales@come-tech.com.tw  
<http://www.come-tech.com.tw>