

DAIHAN-brand® Digital Precise Water Bath, "WB", 6-/11-/22- Lit., up to 100°C, ±0.1°C, CE-Certi. with Digital Fuzzy Control System, 1×Stainless steel Flat Lid, and Back Light LCD, with Certi. & Traceability
 정밀 항온수조, 디지털 퍼지 제어 시스템, Stainless steel Flat Lid 포함



Digital Precise Water Bath, 11Lit. "WB-11"

- with Certificate & Traceability : Controlled by Serial Number, Certificate, Delivery-information, and Traceable Data Base System
- Digital Fuzzy Control System Implementing Superior Temperature Accuracy
- Patented Jog-Shuttle Control System and Digital LCD with Back-Light Function
- PL(Product Liability) Insurance

- * User's Self-Compensation Function to Control Difference between Real Temperature and Indicated Temperature (±10.0°C).
- * 304 Stainless steel Bath & Lid for Superior Durability & High Thermal Efficiency/Constant.
- * Digital Timer Function(99hr 59min) : 'Delay Time' and 'Operation Time' can be Controlled.
- * Storage Function for the Set Values of Temperature and Timer.
- * Locking Mode Supported for Experimental Safety (Input to Jog-Shuttle can be Disabled).

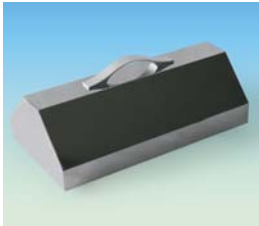
Specification

| Capacity & Models | 6 Lit. "WB-6" | 11 Lit. "WB-11" | 22 Lit. "WB-22" |
|---|--|---------------------------|---------------------------|
| Temp. Range & Accuracy | Ambient +5°C ~ 100°C, ±0.1°C | | |
| Temp. Resolution | 0.1°C - Display, 0.1°C - Control | | |
| Temp. Uniformity & Probe | ±1.0°C, PT100 | | |
| Heating Power | 800 W | 1 kW | 2 kW |
| Timer & Alarm | 99hr 59min (Delay & Continuous run), Error status & Timer-end | | |
| Display | Digital LCD with Back-Light Function | | |
| Controller | Digital Fuzzy Controller with Jog - Shuttle Switch (Turn + Push) | | |
| Safety Circuit | Over-Temp. / -Current protection, Sensor Error Detection | | |
| Material | Stainless steel (# 304)-Internal, Powder Coated steel-External | | |
| Lid | included Stainless steel Flat Lid, Optional Dome Lid | | |
| Drain Valve | None | | Mounted(φ9.5~11mm) |
| Dimension (w × d × h) | Effective Space | 300 × 155 × h110mm | 302 × 240 × h110mm |
| | Internal | 300 × 155 × h150mm | 302 × 240 × h150mm |
| | External | 325 × 180 × h260mm | 325 × 265 × h260mm |
| Packing Size (mm) and Gross Weight (kg) | 350 × 210 × h310mm, 8 kg | 350 × 300 × h310mm, 10 kg | 570 × 360 × h310mm, 14 kg |
| | Power Supply* 1 Phase, AC 120 V, 60 Hz or AC 230 V, 50 / 60 Hz | | |

* Other Specifications are available upon Customer's Request.



(1) Flat Lid, Stainless steel (Included)



(2) Dome Lid, Stainless steel



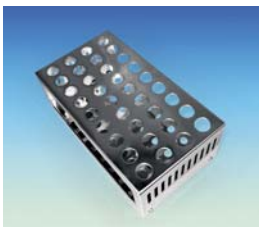
(3) "BFC106"
Lid with Concentric Ring Cover Sets for 6Lit.



(4) "BFC111"
Lid with Concentric Ring Cover Sets for 11Lit.



(5) "BFC122"
Lid with Concentric Ring Cover Sets for 22Lit. Bath



(6) Test Tube Rack, Stainless steel

Ordering Information

| | Ea. Price, ₩ |
|---|--------------|
| DH.WB000106 Water Bath, Digital, 230V, 6 Lit., "WB-6" | 427,600 |
| DH.WB000111 , 11 Lit., "WB-11" | 456,440 |
| DH.WB000122 , 22 Lit., "WB-22" | 527,780 |
| DH.WB000206 Water Bath, Digital, 120V, 6 Lit., "WB-6" | 427,600 |
| DH.WB000211 , 11 Lit., "WB-11" | 456,440 |
| DH.WB000222 , 22 Lit., "WB-22" | 527,780 |

Spare Flat Lids, Stainless steel

| | Ea. Price, ₩ |
|--|--------------|
| DH.WB010106 (1) Flat Lid, for 6 Lit., w325 × d176mm, "BF106" | 20,840 |
| DH.WB010111 , for 11 Lit., w325 × d265mm, "BF111" | 22,640 |
| DH.WB010122 , for 22 Lit., w530 × d325mm, "BF122" | 29,940 |

Optional Lids and Tube Rack, Stainless steel

| | Ea. Price, ₩ |
|--|--------------|
| DH.WB010206 (2) Dome Lid, for 6 Lit., 324 × 176 × h100mm, "BD206" | 132,430 |
| DH.WB010211 , for 11 Lit., 324 × 263 × h100mm, "BD211" | 146,430 |
| DH.WB010222 , for 22 Lit., 533 × 328 × h100mm, "BD222" | 166,830 |
| DH.WB030106 (3) Lid with 2 × Concentric Ring Cover Sets, for 6 Lit., Stainless steel, 330 × 182 × h20mm, "BFC106" | 64,150 |
| DH.WB030111 (4) Lid with 2 × Concentric Ring Cover Sets, for 11 Lit., Stainless steel, 329 × 269 × h20mm, "BFC111" | 78,470 |
| DH.WB030122 (5) Lid with 6 × Concentric Ring Cover Sets, for 22 Lit., Stainless steel, 539 × 334 × h20mm, "BFC122" | 137,890 |
| DH.WB020106 (6) Tube Rack, for 6 Lit., 36Hole × φ 17mm, "BTH106", Stainless steel, 220 × 125 × h78.5mm | 35,830 |
| DH.WB020206 (6) Tube Rack, for 6 Lit., 15Hole × φ 32mm, "BTH206", Stainless steel, 220 × 125 × h78.5mm | 35,830 |
| DH.WB020111 (6) Tube Rack, for 11 Lit., 63Hole × φ 17mm, "BTH111", Stainless steel, 220 × 205 × h78.5mm | 42,780 |
| DH.WB020211 (6) Tube Rack, for 11 Lit., 25Hole × φ 32mm, "BTH211", Stainless steel, 220 × 205 × h78.5mm | 42,780 |

Validation (IQ, OQ) Service

| | Ea. Price, ₩ |
|---|--------------|
| DH.WB040106 Validation Service(IQ, OQ), "BV106", for "WB-6" | 문의요함 |
| DH.WB040111 , "BV111", for "WB-11" | 문의요함 |
| DH.WB040122 , "BV122", for "WB-22" | 문의요함 |