

Esco Frontier® Mono™ Laboratory Fume Hood,
Model EFH-4A.
(Shown with optional base cabinet)

Frontier® MONO™

General Purpose Laboratory Fume Hoods

Introduction

Laboratory fume hoods are essential equipment used to protect operators against exposure to hazardous chemicals and gases. The Frontier® Mono™ fume hood is the most basic of all Esco ducted fume hoods with a single wall construction designed for a fully maximized internal work zone. This hood is generally applicable for common laboratory applications such as boiling, evaporation, drying and other applications that emits noxious fumes and vapors.

Superstructure

- Main body is constructed of electrogalvanized steel and aluminum with oven-baked electrogalvanized hybrid Isocide™ powder coating for long-term chemical abrasion and weathering resistance.
- Durable and corrosion resistant internal liner made of Esco Resinate Phenolic Resin laminates.
- Esco Isocide™ powder coating prevents surface contamination and inhibits bacterial growth.
- State-of-the-art baffle system constructed of phenolic resin laminate delivers maximum containment by ensuring airflow uniformity throughout the main chamber.
- Grade 304 Stainless steel airfoil safely ventilates fumes generated towards the back of the hood for superior operator protection.
- Has a vertical-rising sash constructed of tempered laminated glass with fail-safe counterbalanced mechanism.
- Aerodynamic design eliminates air turbulence, minimizes noise levels and static pressure losses.
- Progressive Bypass Airflow System redistributes air intake when sash is closed, maintaining optimum face velocity inside the hood.

Aesthetics and Ergonomics Design

- Single wall design provides a fully maximized internal work zone.
- Complementary neutral white with blue accent blends the hood with any casework, metal or wood.
- Energy-efficient hood lighting through a pre-wired, electronic ballast. Typical light intensity on work surface is 791 lux in zero ambient conditions.
- Color temperature is tuned to provide a gentle and comfortable work environment for the user.

Serviceability

- Removable baffles allow easy cleaning of baffle boards and internal liner material.
- Esco Frontier® Mono™ can be shipped unassembled to save freight costs and to provide convenience during transport. Easy-to-follow assembly instructions are provided.

Safety Certified and Tested

All Esco fume hoods are manufactured for the most demanding laboratory applications.

- Independently tested and certified by Invent-UK to meet and exceed the requirements of ANSI/ASHRAE 110-1995 standard, assuring you of a safe and reliable laboratory fume hood.
- Sash is clearly labeled with all operating instructions and illustrations.

Base Cabinet for Frontier® Mono™ Fume Hoods

- Built-in dished black phenolic resin laminate tabletop; highly resistant to a wide variety of common laboratory acids, solvents and chemicals; phenolic resin is easy-to-clean, will not discolor, and will not corrode.
- Four (4) electrical socket outlets (total rating: 5 A) with splash-proof covers are provided with the base cabinet (for alternative electrical outlet options contact Esco, specify amps required).
- Service fixtures include: 1 swan-neck remote control water faucet and 1 standard remote control fitting for gas. Fixtures are BS 2874 / DIN Standard and 12920 / DIN12898 compliant.
- Has a built-in high quality polypropylene drip cup that is durable and easy to clean.
- Accessible panel is provided at the backwall of the cabinet for convenient plumbing installation.
- Designed for ergonomics and operator comfort: the cabinet depth is 100 mm less than the fume hood, providing the operator with more leg room.
- Each cabinet includes an adjustable white powder-coated steel shelf for storage purposes. Cabinet door is lockable.
- Additional / customized fixture arrays are available. Please contact Esco or your local distributor for details.

General Specifications, Frontier® Mono™ Fume Hoods

Model	220-240 VAC, 50/60 Hz, 1Ø	EFH-4A8 2090135	EFH-5A8 2090142	EFH-6A8 2090148		
	110-120 VAC, 50/60 Hz, 1Ø	EFH-4A9 2090314	EFH-5A9 2090315	EFH-6A9 2090147		
Nominal size	1.2 meter (4')		1.5 meter (5')		1.8 meter (6')	
External Dimensions (W x D x H)	1200 x 873 x 1500 mm (47.2" x 34.4" x 59.1")		1500 x 873 x 1500 mm (59.0" x 34.4" x 59.1")		1800 x 873 x 1500 mm (70.9" x 34.4" x 59.1")	
Internal Work Area, Dimensions (W x D x H)	1120 x 682 x 1435 mm (44.1" x 26.9" x 56.5")		1420 x 682 x 1435 mm (55.9" x 26.9" x 56.5")		1720 x 682 x 1435 mm (67.7" x 26.9" x 56.5")	
Exhaust Volume / Static Pressure Required Face Velocity of 0.5 m/s (100 fpm) at Full Open Sash	1109 cmh at 68 Pa (653 cfm at 0.27" WG)		1406 cmh at 80 Pa (827 cfm at 0.32" WG)		1703 cmh at 88 Pa (1002 cfm at 0.34" WG)	
Exhaust Outlet Diameter	250 mm (10.0")		250 mm (10.0")		305 mm (12.0")	
Fluorescent Light Intensity	791 lux (73.5 foot-candles)		1011 lux (94 foot-candles)		1231 lux (114 foot-candles)	
Construction	Main Body	EG steel with aluminum and oven-baked Epoxy-polyester hybrid Isocide™ powder coating				
	Internal Liner	Esco Resinate™ Phenolic Resin laminates				
	Interior Baffle System	Esco Resinate™ Phenolic Resin laminates				
	Airfoil	Stainless Steel grade 304				
	Work Top	No built-in worktop for the fume hood unit. The phenolic dished work top is included with the base cabinet				
Sash Specification	Sash Material	Tempered Laminated and Framed Sash Glass				
	Sash Configuration	Vertical				
	Sloping	No sloping				
	Maximum Sash Opening	550 mm (21.7")				
Power Consumption	25 W (Fluorescent Lighting Only)					
Electrical*	Cabinet Full Loads Amps (FLA)	7 A				
	Optional Outlets (FLA)	6 A				
	Cabinet Nominal Power	60 W		100 W		
	Cabinet BTU/Hr	205		341		
Controller	Rocker Switches					
Net Weight**	120 Kg (264 lbs)		155 Kg (342 lbs)		180 Kg (397 lbs)	
Shipping Weight**	199.0 Kg (439 lbs)		210.0 Kg (463 lbs)		226.3 Kg (499 lbs)	
Shipping Dimensions, Maximum** (W x D x H)	1300 x 950 x 1940 mm (51.2" x 37.4" x 76.4")		1650 x 950 x 1940 mm (65.0" x 37.4" x 76.4")		1950 x 950 x 1940 mm (76.8" x 37.4" x 76.4")	

*The maximum rating of all the electrical outlets combined is 5 Amp. Please contact Esco if you need electrical outlets with higher capacity.

**Fume hood unit only. Excludes base cabinet / optional stand.

General Specifications, Base Cabinet for Frontier® Mono™ Fume Hoods

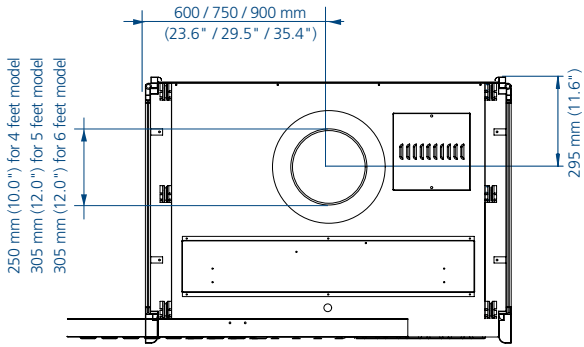
Model	EBC-4A0 2090049	EBC-5A0 2090053	EBC-6A0 2090522
Nominal size	1.2 meter (4')		1.8 meter (6')
External Dimensions (W x D x H)	1200 x 850 x 886 mm (47.2" x 33.5" x 34.9")		1800 x 850 x 886 mm (70.9" x 33.5" x 34.9")
Net Weight	106 Kg (234 lbs)		142 Kg (313 lbs)
Shipping Weight	158.8 Kg (350 lbs)		231.5 Kg (510 lbs)
Shipping Dimensions, Maximum (W x D x H)	1300 x 950 x 1940 mm (51.2" x 37.4" x 76.4")		1950 x 950 x 1940 mm (76.8" x 37.4" x 76.4")

Frontier® **MONO™**

Fume Hoods • Laboratory Fume Hoods

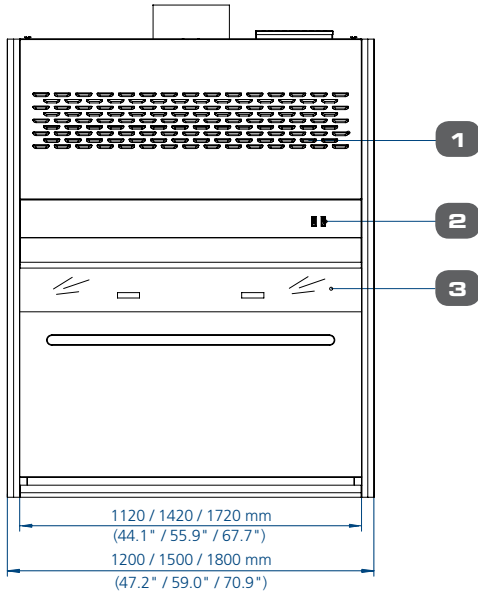
Model EFH Frontier® Mono™ Fume Hood Engineering Drawing

Top View

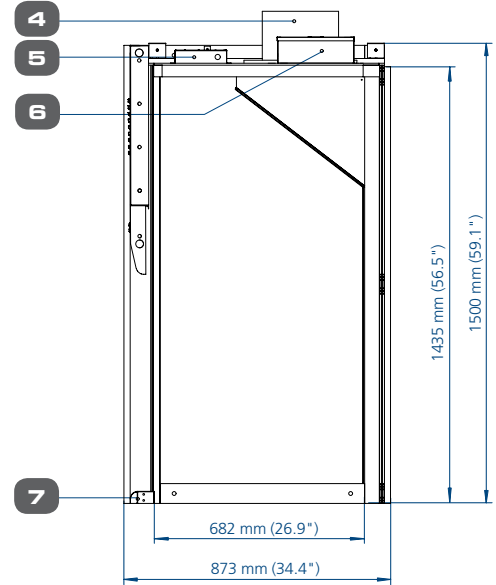


1. Bypass Slots
2. Rocker Switches
3. Sash Window
4. Exhaust Collar
5. Fluorescent Lamp
6. Electrical Panel
7. Ergonomic Airfoil

Front View



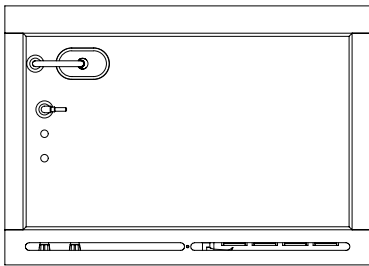
Side View



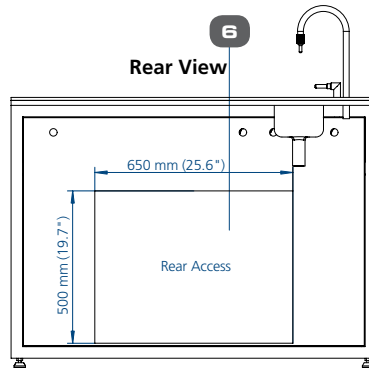
3

Model EBC Base Cabinet for Frontier® Mono™ Fume Hood Engineering Drawing

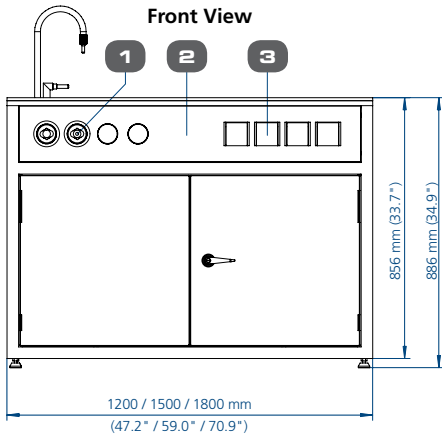
Top View



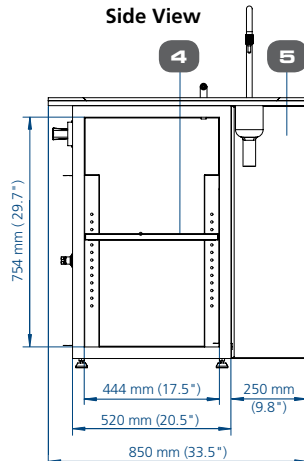
Rear View



Front View



Side View

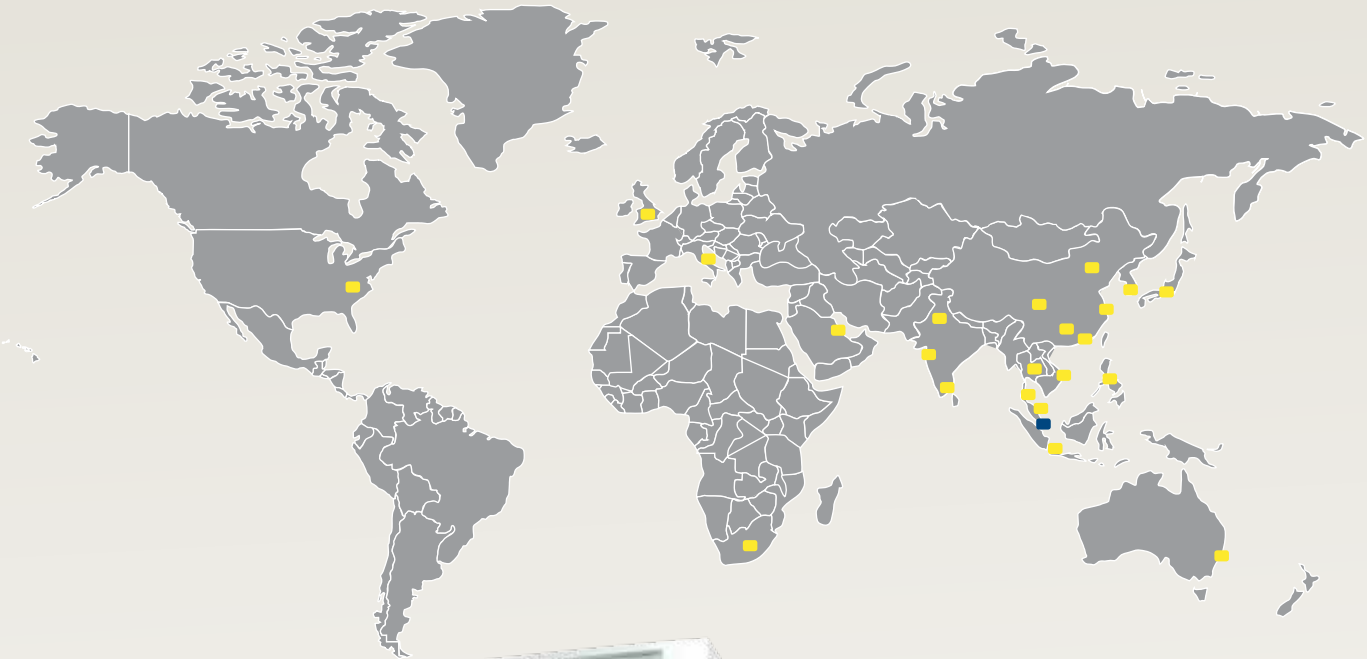


1. Service fixture
2. Removable Front Panel
3. Electrical outlets
4. Adjustable Shelf
5. Side Filler Panel
6. Rear Access for plumbing

Fume Hood Installation Requirements

- Proper location (refer to Esco recommendations)
- Exhaust system capable of delivering airflow and pressure drop requirements
 - Exhaust ductwork and connection accessories
 - Exhaust blower (or building exhaust system)
 - Contractor (if applicable)
 - Means of adjusting exhaust flow (damper or frequency inverter)
- Sufficient laboratory supply air
- Base cabinet or other means of support
- Plumbing and electrical hook-up
- Unless otherwise specified, items and services specified above are not provided by Esco

ESCO GLOBAL NETWORK



- ART Equipment
- Biological Safety Cabinets
- CO₂ Incubators
- Compounding Pharmacy Equipment
- Containment / Pharma Products
- Ductless Fume Hoods
- Freeze Dryer
- Lab Animal Research Products
- Laboratory Fume Hoods
- Laboratory Ovens and Incubators
- Laminar Flow Clean Benches
- PCR Cabinets
- PCR Thermal Cyclers
- Powder Weighing Balance Enclosures
- Ultra-low Freezers

The Esco Group of Companies is a global life sciences tools provider with sales in over 100 countries. The group is active in lab equipment, pharma equipment and medical devices. Manufacturing facilities are located in Asia and Europe. R&D is conducted worldwide spanning the US, Europe and Asia. Sales, service and marketing subsidiaries are located in 12 major markets including the US, UK, Singapore, Japan, China and India. Regional distribution centers are located in the US, UK, and Singapore.

Life Science • Chemical Research • Assisted Reproductive Technology (ART) • Pharmaceutical Equipment • General Equipment

ESCO

WORLD CLASS. WORLDWIDE.

Esco Micro Pte. Ltd. • 21 Changi South Street 1 • Singapore 486 777
 Tel +65 6542 0833 • Fax +65 6542 6920 • mail@escoglobal.com
 www.escoglobal.com

Esco Technologies, Inc. • 903 Sheehy Drive, Suite F, Horsham, PA 19044, USA
 Toll-Free USA and Canada 1-877-479-3726 • Tel 215-441-9661 • Fax 484-698-7757
 eti.sales@escoglobal.com • www.escolifesciences.us

Esco Global Offices: Manama, Bahrain | Beijing, China | Chengdu, China | Guangzhou, China | Shanghai, China
 Kowloon, Hong Kong | Bangalore, India | Delhi, India | Mumbai, India | Jakarta, Indonesia | Rome, Italy | Osaka, Japan
 Kuala Lumpur, Malaysia | Melaka, Malaysia | Manila, Philippines | Moscow, Russia | Singapore | Midrand, South Africa
 Seoul, South Korea | Bangkok, Thailand | Barnsley, United Kingdom | South Yorkshire, United Kingdom | Philadelphia, PA, USA | Hanoi, Vietnam