

MobIR Use Manual

v1.0 2021.11



CONTENTS

Chapter 1 Cautions	1
Chapter 2 Software Functions	2
2.1. Camera	2
2.1.1. Start page.....	2
2.1.2. Connection description	2
2.1.3. Loading page	3
2.1.4. Version description	3
2.1.5. Description on the home page of common thermometry mode	5
2.1.6. Description on the homepage of human body thermometry mode ...	6
2.1.7. Description on the home page of night view mode	7
2.1.8. Focusing	8
2.1.9. Brightness/contrast	8
2.1.10. Shutter compensation	8
2.1.11. Add analysis object	9
2.1.12. Color zone	11
2.1.13. Photo/video enabling switching	12
2.1.14. Photography/Video Start/Video End	12
2.1.15. Enable the PIP	13
2.1.16. Detail enhancement adjustment	13
2.2. Album	14
2.2.1. Cloud album	15
2.2.2. Local album	15

2.2.3. Photo/video details	16
2.2.4. Select/cancel	16
2.2.5. Photo color zone replacement	17
2.2.6. Add/modify or delete analysis object	17
2.2.7. Enable visible light	18
2.2.8. Share	18
2.2.9. Delete photos	18
2.3 Mine	19
2.3.1 Mine	19
2.3.3. Settings	20
2.3.4. Radiometer	21
2.3.5. Temperature unit	21
2.3.6. Temperature alarm	22
2.3.7. Associated visible light	22
2.3.8. Isotherm color	23
2.3.9. Language settings	23
2.3.11. Restore factory settings	24
Chapter 3 Contact	25

Chapter 1 Cautions

1. Do not use dissolved or similar liquids for the equipment, which may cause damage to the equipment.
2. Please try to keep stable and avoid shaking when using the equipment.
3. During use, it is a normal phenomenon that the equipment is performing the shutter correction when the with "click" sound occasionally occurs.
4. The normal working temperature of the equipment is $0^{\circ}\text{C} \sim 45^{\circ}\text{C}$, the optimal working temperature is $16^{\circ}\text{C} \sim 22^{\circ}\text{C}$, the storage temperature is $-10^{\circ}\text{C} \sim 55^{\circ}\text{C}$, and the relative humidity is $5\% \sim 95\%$ in non-condensate state.
5. Do not disassemble the product violently to avoid irreversible damage.
6. Please prevent hard objects from contacting the lens of the equipment to avoid damage to the lens.
7. Do not point the product lens to high-intensity energy sources (including solar, laser emission equipment and reflection sources of these equipment), otherwise it may adversely affect the thermometry accuracy of the product and may damage or permanently damage the infrared detector of the product.
8. Please put the product into the portable box when it is not being used.

Chapter 2 Software Functions

2.1. Camera

2.1.1. Start page

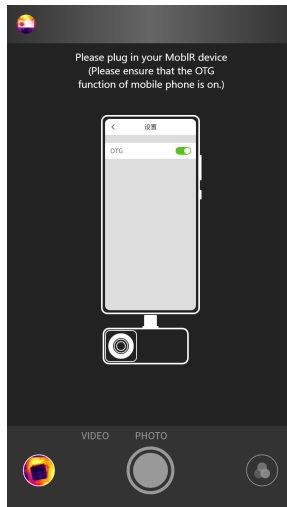
The following startup interface will first appear when APP is opened:



2.1.2. Connection description

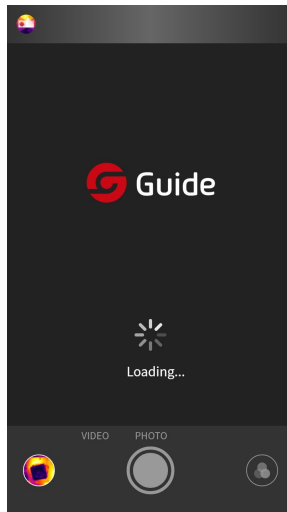
When the user inserts the product into the mobile phone interface, the APP will be automatically started. If the device or mobile phone OTG has not been started, the following page will be provided:

When the equipment is not detected, "Album" and "Mine" are also available.



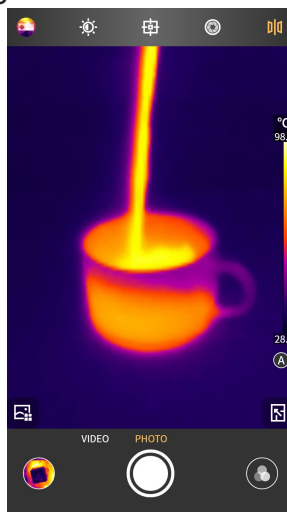
2.1.3. Loading page

After the device is detected, the infrared image from MobIR infrared accessories is loaded, as shown in the following figure:



2.1.4. Version description

The MobIR APP can support all MobIR series mobile phone accessories of Guide Sensmart. When the device inserted by the user is MobIR Air, the normal thermometry mode is used by default in homepage, as shown in the following figure:



When the device inserted by the user is MobIR 2T, the homepage after entry is the human body thermometry scene by default, as shown in the following picture:



When the device inserted by the user is MobIR 2S, the homepage after entry is the night vision scene by default, as shown in the following picture:

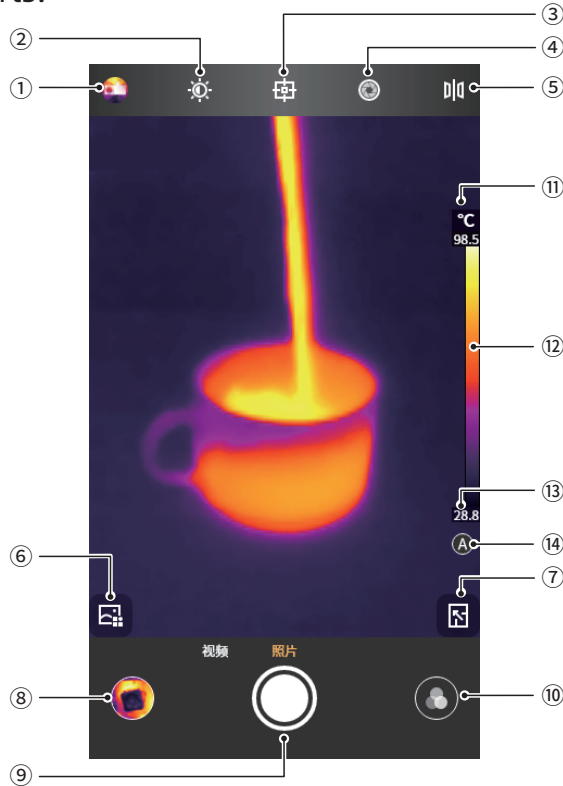


The scenes supported by three devices are shown in the following table:

Device / Scene mode	MobIR Air	MobIR 2T	MobIR 2S
Normal thermometry mode	√	√	√
Human body thermometry mode	×	√	×
Night view mode	×	×	√

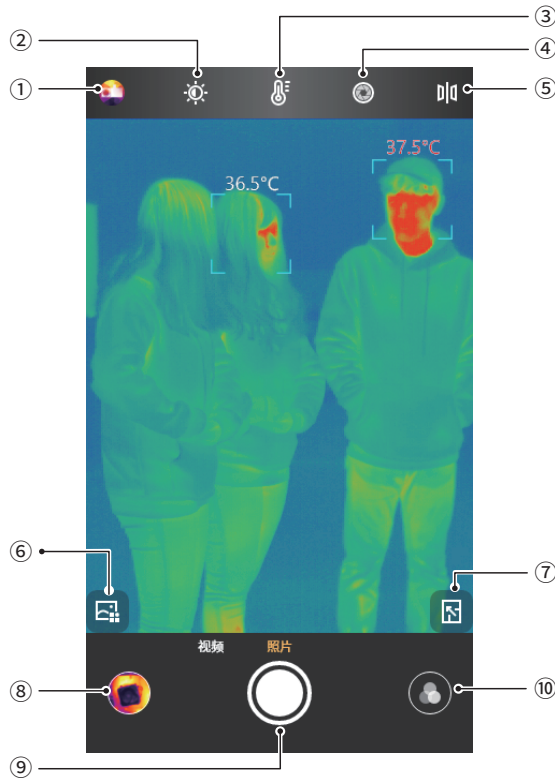
2.1.5. Description on the home page of common thermometry mode

As shown in the following figure, the home page is divided into the following 14 parts.



- | | |
|---------------------------|---|
| ① Mine | ⑧ Index (view recently taken photos/videos) |
| ② Brightness/contrast | ⑨ Photograph / video recording |
| ③ Analysis object toolbox | ⑩ Color zone switching |
| ④ Shutter compensation | ⑪ Upper temperature limit |
| ⑤ Image mirroring | ⑫ Color zone of temperature distribution |
| ⑥ Select scene | ⑬ Lower temperature limit |
| ⑦ PIP | ⑭ Auto/manual dimming |

2.1.6. Description on the homepage of human body thermometry mode



- ① Mine
- ② Brightness/contrast
- ③ Analysis object toolbox
- ④ Shutter compensation
- ⑤ Image mirroring
- ⑥ Select scene
- ⑦ PIP
- ⑧ Index (view recently taken photos/videos)
- ⑨ Photograph / video recording
- ⑩ Color zone switching

2.1.7. Description on the home page of night view mode




- ① Mine
- ② Brightness/contrast
- ③ Analysis object toolbox
- ④ Shutter compensation
- ⑤ Image mirroring
- ⑥ Select scene
- ⑦ PIP
- ⑧ Index (view recently taken photos/videos)
- ⑨ Photograph / video recording
- ⑩ Color zone switching
- ⑪ Image mode-enhancement
- ⑫ Image mode-highlight
- ⑬ Image mode-natural

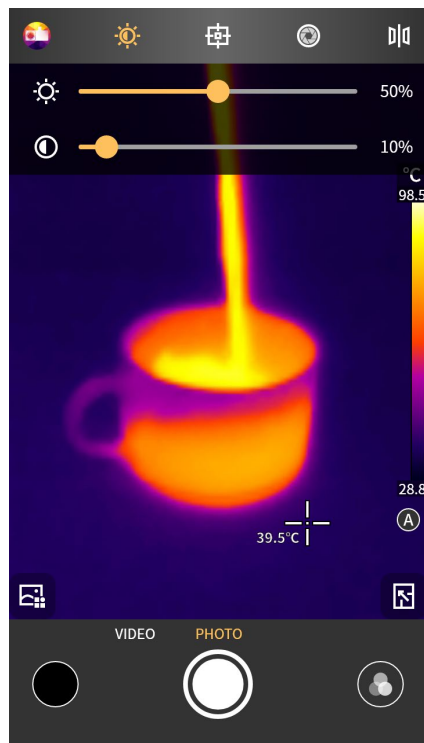
2.1.8. Focusing

In the homepage, if there is no analysis object or pop-up menu, tapping the interface will trigger auto focusing, accompanied by the focusing sound of "beep" until the interface is clear.


If the auto focusing is completed and the screen still seems unclear, operate the volume +-button of the mobile phone to fine tune the focusing manually.

2.1.9. Brightness/contrast


Click the icon  on the main interface to adjust the brightness and contrast at 0-100%, which is 50% brightness and contrast by default.

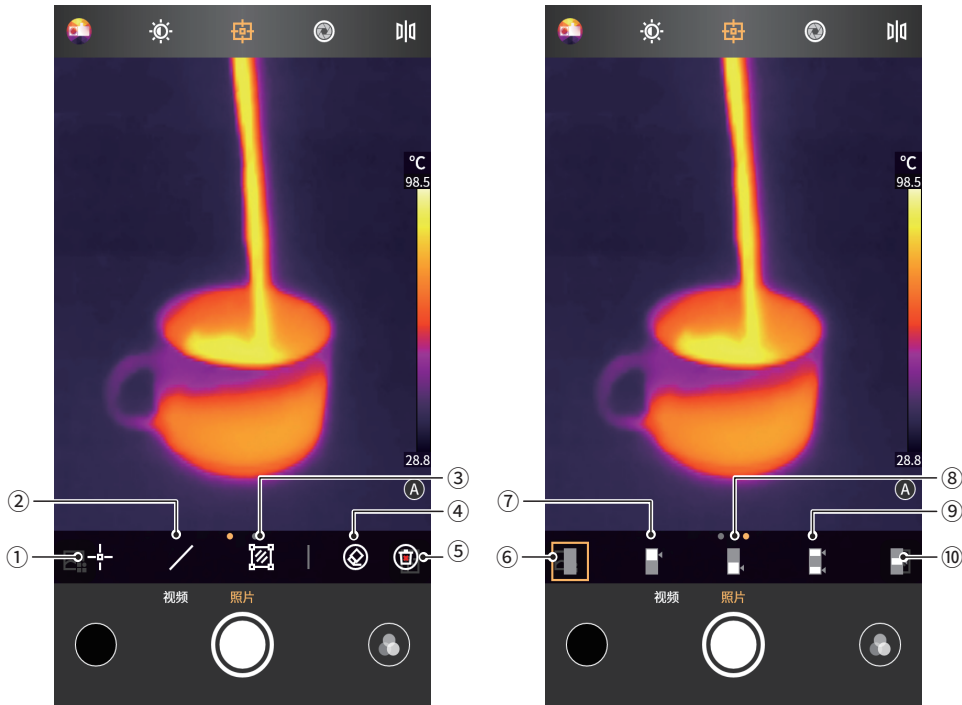


2.1.10. Shutter compensation

Click to  compensate the manual shutter.


2.1.11. Add analysis object

Click to  enter the interface of adding analysis object, as shown in the following figure, to add point/line/surface analysis object, and there can be three points at the same time, one line and two areas analysis objects.




- ① Add point thermometry
- ② Add line thermometry
- ③ Add area thermometry
- ④ Delete the selected analysis object
- ⑤ Remove all analysis objects
- ⑥ Close isotherm
- ⑦ Upper isotherm
- ⑧ Lower isotherm
- ⑨ Intermediate isotherm
- ⑩ Isotherm at both ends

1. Point thermometry


Click the icon  to add a point thermometry analysis object in the current interface and expand a semi-transparent information column on the left side of the interface to display the temperature information

of the added analysis object. Keep clicking to add it continuously. If the point position is changed by dragging, the temperature information of the point is updated synchronously in the temperature information column on the left, and at most 3 point thermometry analysis objects can be added.

2. Line thermometry

Click the icon  to add a line thermometry analysis object in the current interface and expand a semi-transparent information column on the left side of the interface to display the temperature information of the added analysis object. If the line position is changed by dragging, the temperature information of the line is updated synchronously in the temperature information column on the left, and at most 1 line thermometry analysis object can be added.


3. Area thermometry

Click the icon  to add a rectangular analysis object in the current interface, and expand a semi-transparent information column on the left side of the interface to display the temperature information of the added analysis object. If the area position is changed by dragging, the temperature information column in the left side is updated synchronously, and 2 rectangular area thermometry analysis objects can be added at most.



4. Delete a single analysis object

Click the icon  to delete a single thermometry analysis object currently selected.

5. Delete all the analysis objects


Click the icon  to clear all thermometry analysis objects in the page with one click.

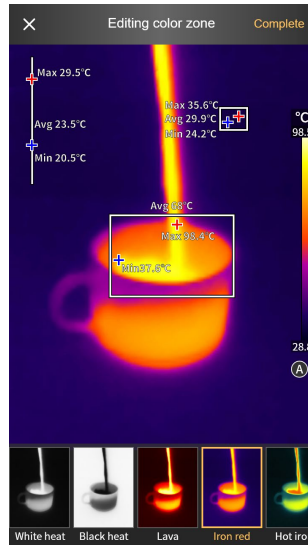
6. Isotherm

Sliding left the page  , it will become  , i.e., isotherm operation can be carried out. The isotherm includes lower isotherm, upper isotherm, intermediate isotherm and isotherms at both ends.

In isotherm mode, detail enhancement adjustment can only be auto mode and manual mode is not available.

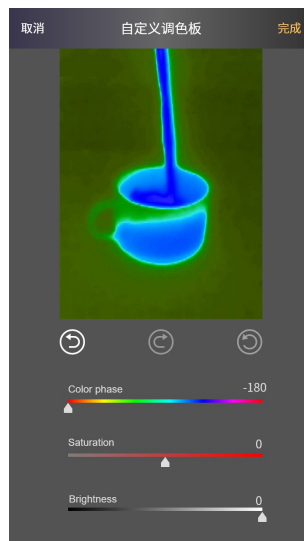
2.1.12. Color zone

In the main interface, click the icon  to open the color zone selection interface. As shown in the figure below, the software provides up to nine kinds of false colors with different combinations for users to switch according to different scenes or preferences.



Colors of the color zone can be customized.

Select the color that needs to be changed on the bottom color zone, drag the slide bar to change, and click the "Complete" button in the upper right corner after the change is completed to save it. The resulting infrared image is a customized color zone effect.



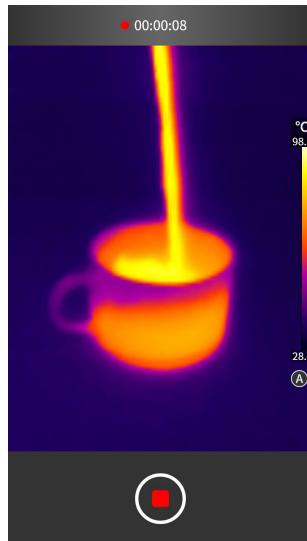
2.1.13. Photo/video enabling switching

Click the button in the lower right corner to switch between taking photos and recording.





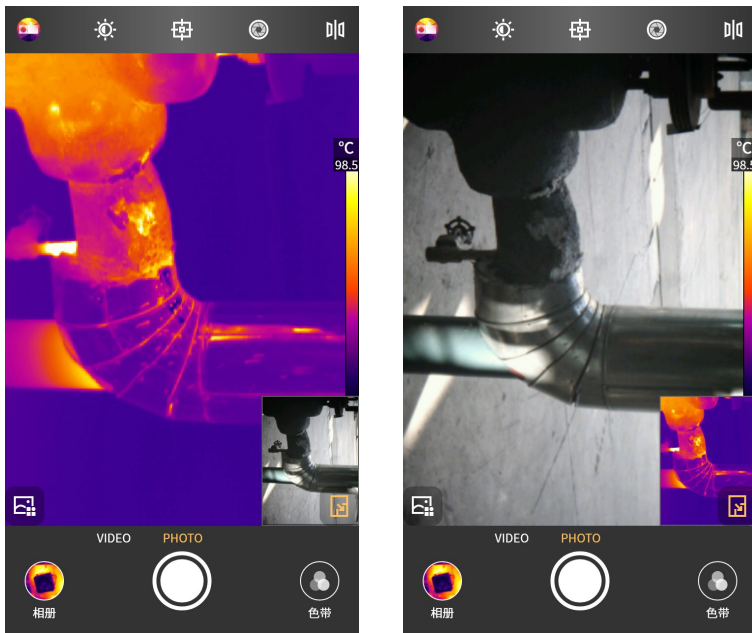
2.1.14. Photography/Video Start/Video End

Click the record button to switch to video recording mode, then recording starts and the recorded time is displaced on the top.


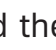


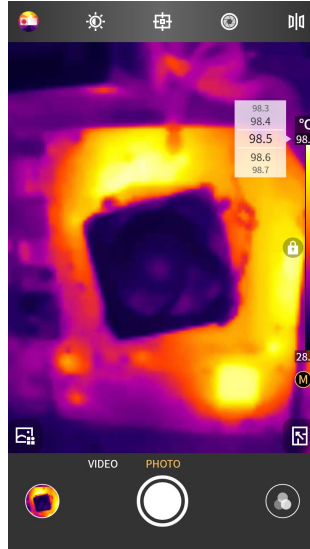
2.1.15. Enable the PIP

Click the icon , APP will start the mobile phone camera on the same side as MobIR and display it in the small window of the PIP. When clicking on any part of the small window except for the position of the icon  range, the display frames of visible light and infrared light will be reversed, and then click the small window again to restore to the state when you start the PIP at the first time.



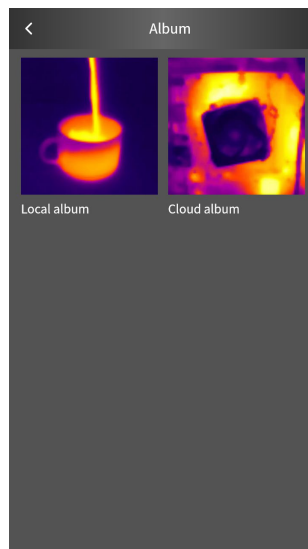
2.1.16. Detail enhancement adjustment

Detail enhancement can be divided into manual and auto modes. The icons at position ① in different modes are different. The auto mode is displayed as: , and the manual mode is displayed as: . When in auto mode, the temperature distribution slider cannot be adjusted. When in manual mode, the ② lower temperature limit and ③ upper temperature limit can be manually adjusted within the temperature measurement range.



2.2. Album

Albums include local album and cloud album. When the user logs in, the corresponding cloud album is displayed. When the user has not logged in, click the cloud album to enter the login page. After logging in, you can check the cloud album.

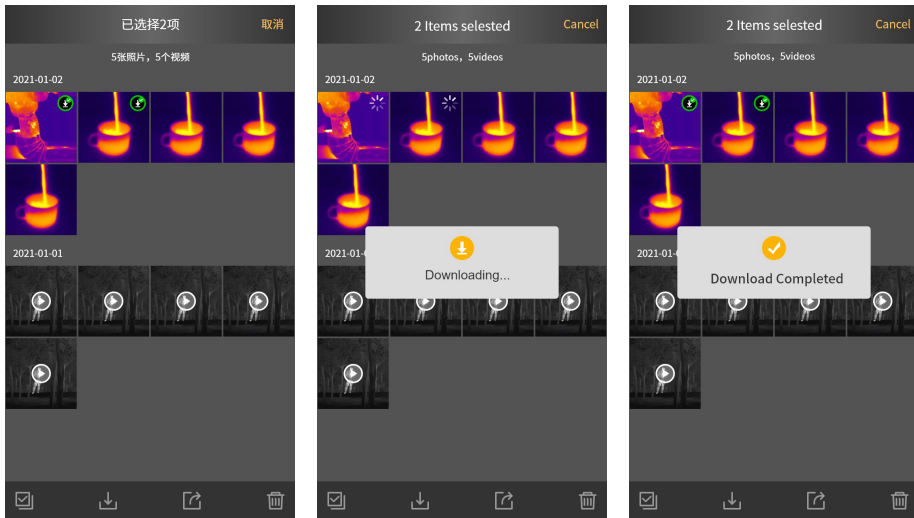


2.2.1. Cloud album

Click cloud album to enter the login page when not logged in. If not registered, log in after registration.

After registration, each user can get 500M cloud album space.

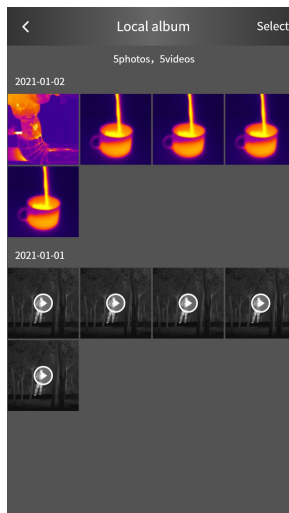
After logging in, the cloud album function can be used. Photos in cloud album can be edited, viewed and deleted after downloading. Before downloading, downloading, preview and deletion are available.




2.2.2. Local album

At the viewing interface, functions such as viewing visible light/sharing/deleting and editing can be performed on the picture.

The video can be played/shared and deleted on the video viewing interface.






2.2.3. Photo/video details

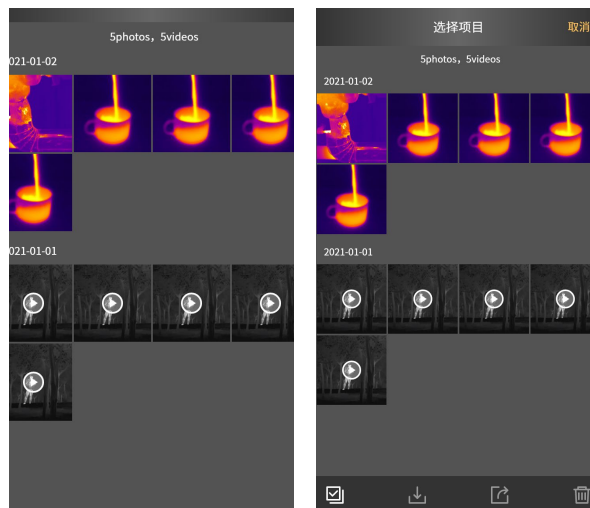
Click the icon  to view the detailed information of the photo in the viewing interface, as shown in the following figure.




2.2.4. Select/cancel

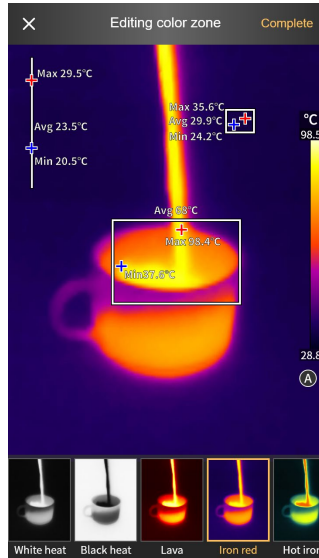
Click "select" button to enter the corresponding selection state. Click photo or video at this time, the document will be selected, and there will be a check state on the corresponding thumbnail. Click "cancel" button to cancel the corresponding check state.

When the photo or video is in the selected state, it is possible to select all/share/delete the photo or video, and the corresponding icons are select all , share  and delete  respectively.




2.2.5. Photo color zone replacement

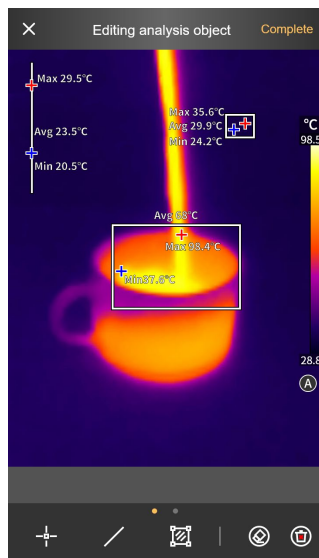
Click the icon  and the following interface appears:



The color zone function of replacing the current picture can be realized by sliding selection, and the operation of custom color zone can be supported.



2.2.6. Add/modify or delete analysis object

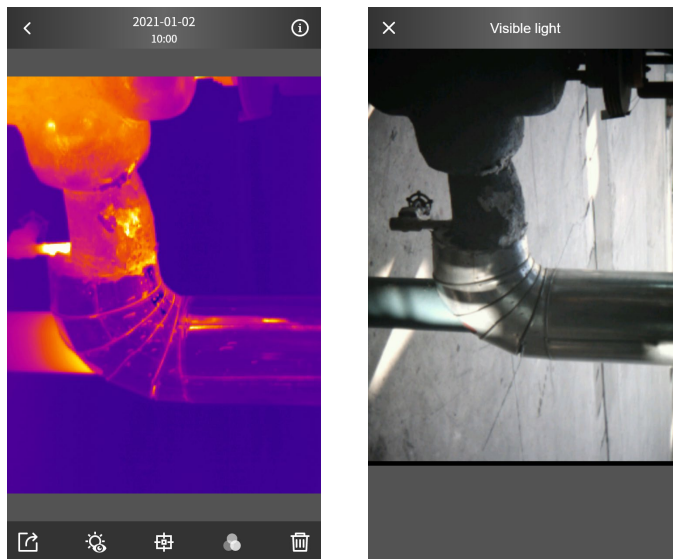
Click the icon  and the following interface will display. The interface is similar to the addition of analysis object and consistent in function. In this interface the analysis object of the picture can be modified/deleted/added.




Click to **(M)** switch the detail enhancement mode to manual mode. The icon changes to **(A)**. When in the auto mode, the slider of temperature distribution cannot be adjusted. When in the manual mode, the lower temperature limit and the upper temperature limit can be manually adjusted within the thermometry range.

2.2.7. Enable visible light


Click the icon  to generate the captured visible light photo. Click the Return icon  to return to the infrared picture interface.



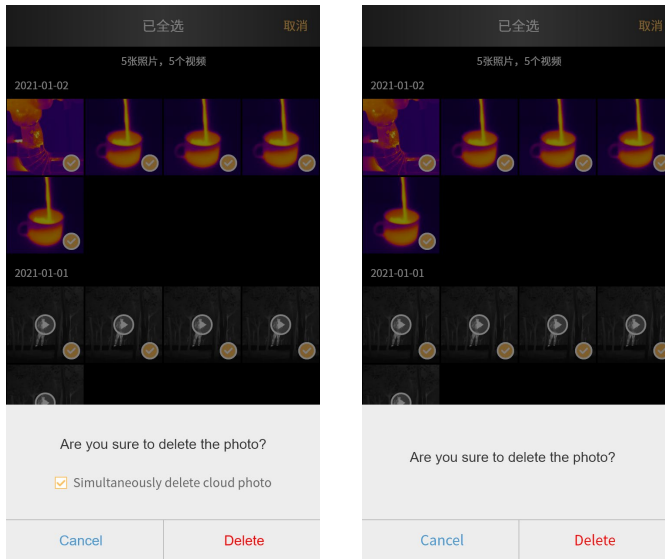
2.2.8. Share

Click the icon  to share the current photo or video, and call the system sharing platform to share it to the relevant social platform installed on the user's mobile phone.

2.2.9. Delete photos

After checking the photo, click the icon  to delete the current photo or video.

When logging in and deleting a photo from the local album, you can select to delete the photo from the cloud album synchronously. If not logged in, delete the photo for secondary confirmation.

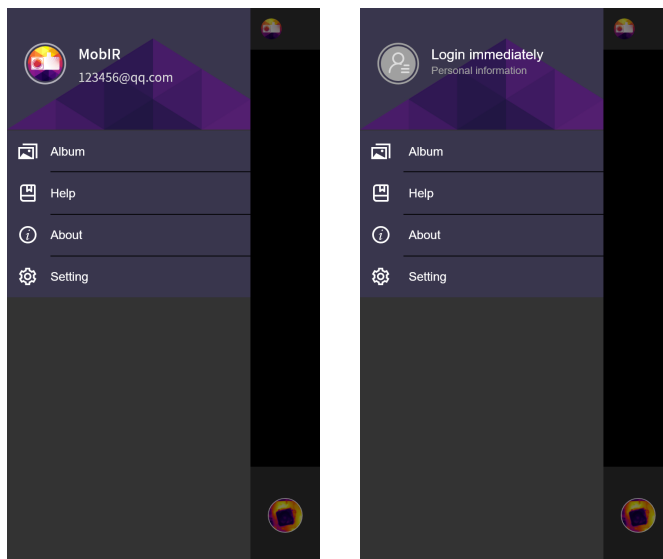


2.3 Mine

2.3.1 Mine

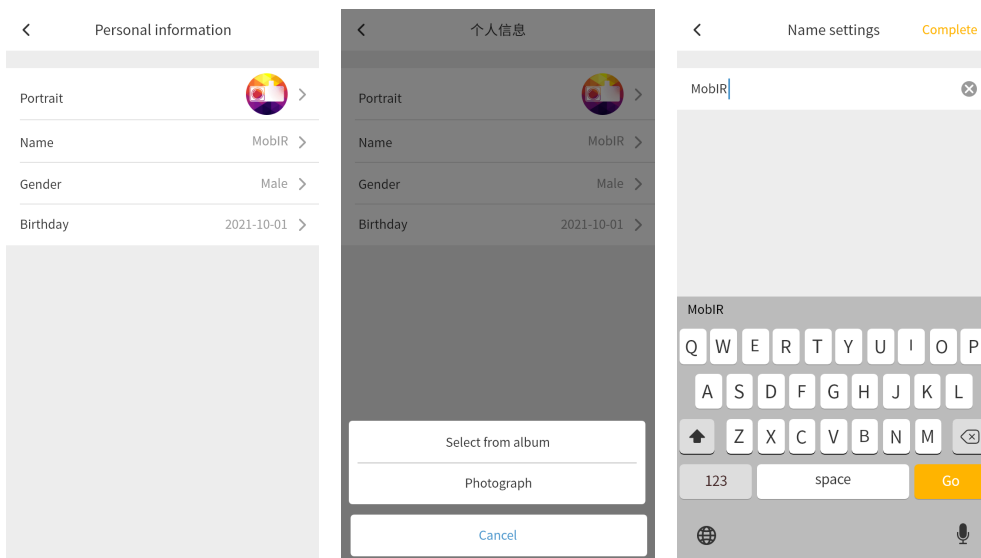
When the user has logged in, the side slide bar displays personal information (portrait nickname account), album, help, about and settings.

When the user has not logged in, the side slide bar displays immediate login (default portrait login entrance), album, help, about, settings.



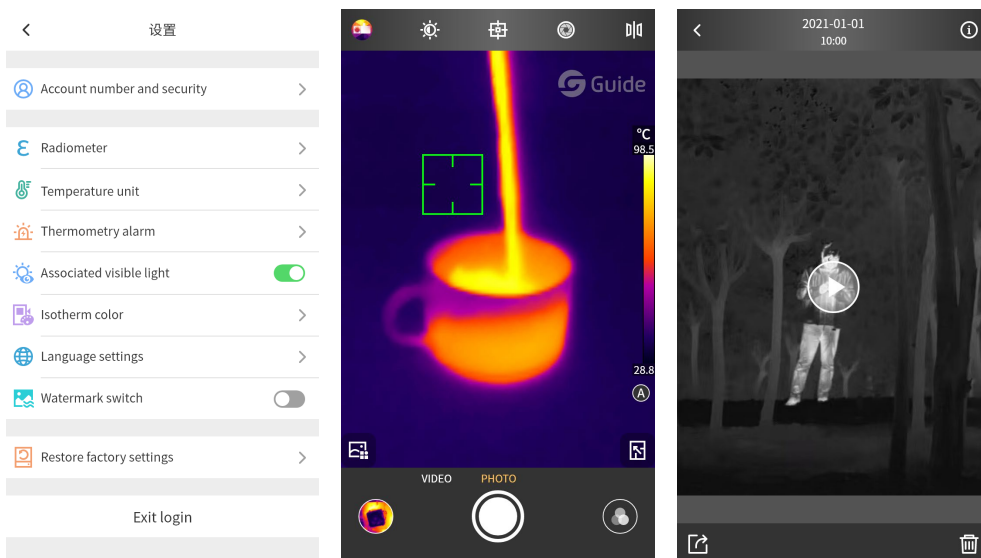
2.3.2. Personal information

After logging in, the user can change the personal information, including changing the portrait, name, gender and birthday.



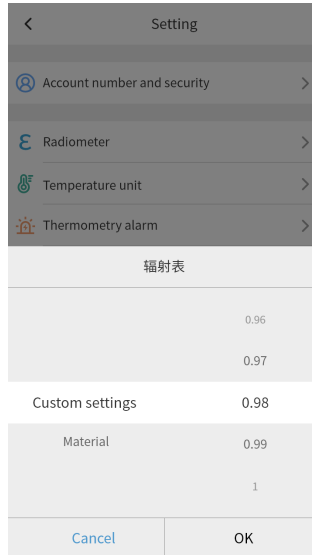
2.3.3. Settings

The watermark is turned on by default, the infrared photos taken contain watermarks, but visible light photos and infrared videos do not contain watermarks. If the mode of watermark is turned off, the infrared photos taken shall be free of watermarks.



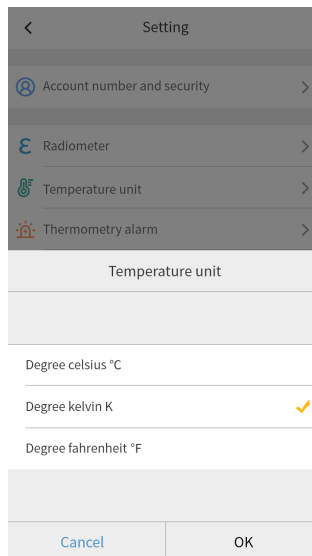
2.3.4. Radiometer

The thermometry parameters of corresponding types can be adjusted according to different objects measured by the users to improve the thermometry accuracy.



2.3.5. Temperature unit

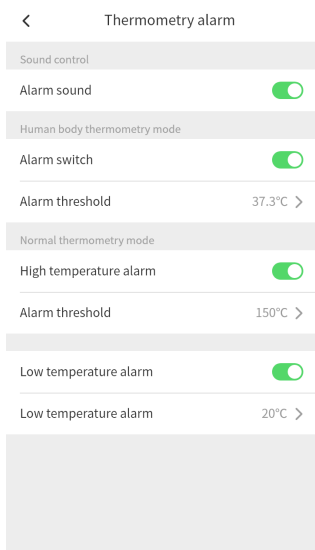
The default is degree celsius, and conversion between three temperature units is supported.



2.3.6. Temperature alarm

Temperature alarm has three large blocks. The first is the alarm sound switch, which mainly controls the overall alarm sound. If it is turned off, there will be no sound during alarm regardless of the human body thermometry or normal thermometry.

The setting of alarm switch and alarm threshold in human body thermometry mode is mainly for human body thermometry mode; Similarly, both the high temperature alarm and low temperature alarm options in normal thermometry mode correspond to the corresponding functions.

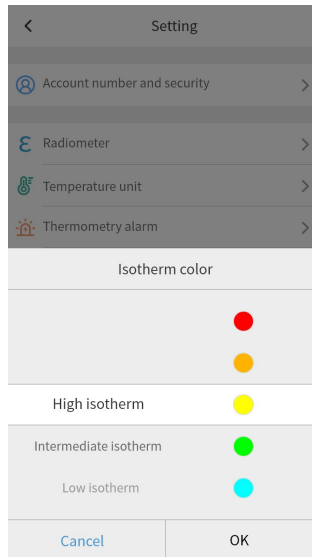


2.3.7. Associated visible light

The switch of associated visible light is turned on by default. When the switch is turned on, click the camera button when the PIP function is on, then the current infrared and visible light photos will be recorded at the same time, and the infrared and visible light photos are associated together when viewing the photo album. If the switch is turned off, the current visible light photos will not be recorded even when the PIP function is turned on while taking photos.

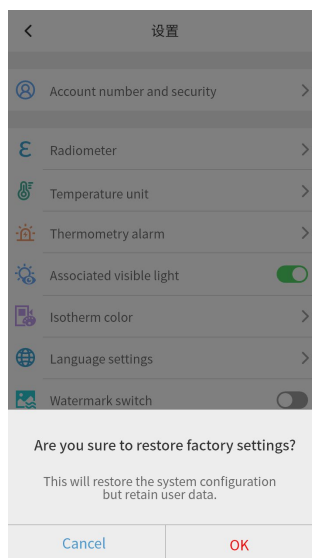
2.3.8. Isotherm color

The color of isotherm can be customized.



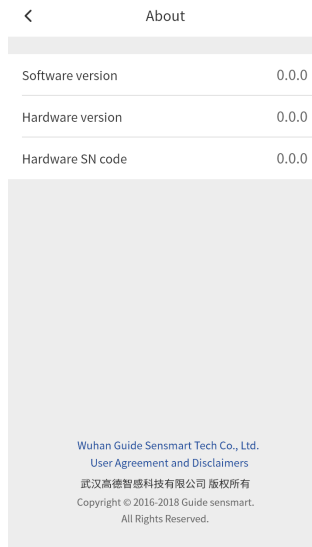
2.3.9. Language settings

Languages can be set up according to the user's needs. Currently, simplified Chinese/English languages are supported, and multi-language will be perfected in the future.



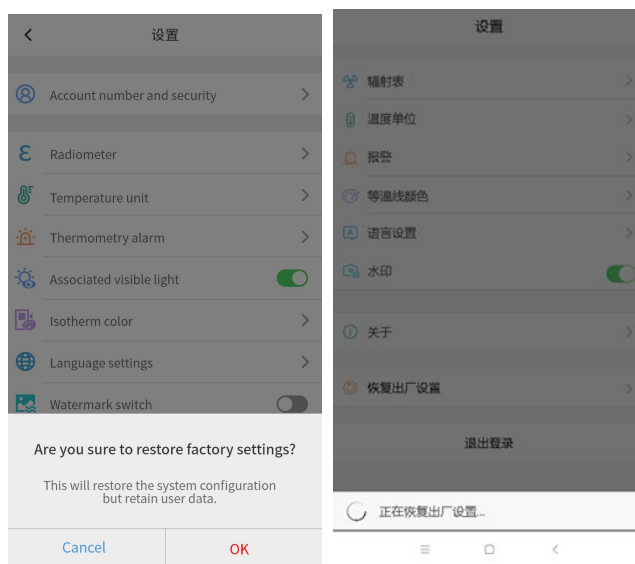
2.3.10. About

Record the version information of APP and the terms of the user agreement.



2.3.11. Restore factory settings

The settings of APP can be restored to the factory mode by pressing one key.



Chapter 3 Contact

Official website of the company:

Chinese website: <http://www.guideir.cn>

English website: <http://www.guideir.com>

WeChat official account: GuideSensmart

WeChat official account QR code:



Official microblog: @GuideSensmart

Email: marketing@guide-infrared.com

Tel: 4008 822 866 (from Monday to Friday 8:40-17:30)

Address: No. 6, Huanglongshan South Road, Donghu Development Zone, Wuhan City, Hubei Province