



## 1000kn Hydraulic Universal Tester Metal,Steel,Iron Tensile Testing Machines With Pc

---



---

## 1000kn Hydraulic Universal Tester Metal,Steel,Iron Tensile Testing Machines With Pc

---

### Download File

[Tensile Testing Machine Standards Sharing.pdf](#)

### APPLICATIONS

1. **Tested sample:** wood, steel sheet, steel rod, wire, screw and other metal materials.
2. **Different test with different grips:** tensile, bend, compression, shear test.
3. **Software** can issue **report** with results for max. force, elongation, tensile strength, compression strength, bend strength, etc.

### Metal

- ASTM E8, EN 10002-1,ASTM A370: Tensile Test
- ASTM A370: Bend Test
- ASTM B-117, ISO 3768: Salt Spray Test
- ISO 6508: Rockwell Hardness Test
- ISO 6507: Vickers Hardness Test
- ISO 6506, ASTM E10-14: Brinell Hardness
- ASTM E23, ISO 148: Impact Test

### Application Industry:

1. Electronic products: mobile phones, computers, television, video recorders and so on
2. Textile fabric products: clothes, hats, shoes, ropes
3. Wire and cable: data cable, usb,
4. Leather products: handbags, wallets, leather shoes, leather chairs
5. Instrumentation, vehicles, plastic products, metal,

6. Food, chemical, building materials, medical, aerospace

7. Metal,iron,steel....

**Hydraulic Universal Testing Machine Main specifications:**

Item	Description
Max. load	1000KN
Load range	20KN-1000KN
Load accuracy	±1%
Elongation resolution	0.01mm
Piston stroke	250mm
Max. piston stroke speed	50mm/min
Elongation accuracy	±1%
Max. Tensile space	550mm(excluding piston stroke)
Max. Compression space	500mm(excluding piston stroke)
Display mode	PC
Clamping mode	Hydraulic
Operation mode	Manual
Flat sample thickness	0-15 mm
Clamping width	125mm
Round sample diameter	Φ13-φ60 mm
Compression plate size	204*204mm
Load frame dimensions	990 x 750 x 2200mm
Oil source dimensions	1200 x 550 x 1100mm

**Hydraulic Universal Testing Machine Main standard accessories:**

Upper and lower platen for compression(200x200mm)	1 set
Extensometer	1 set
Round specimen grip for tensile ( φ6-φ26mm )	1 set
Flat specimen grip for tensile ( 0-15mm )	1 set
Bending accessories	1 set
High accurate load cell	1 set
High precision photoelectric encoder Measuring the displacement	1 set
High pressure pump	1 set
Proportion Valve	1 set

Electro-hydraulic servo valve	1 set
Shearing accessories ( Optional accessories)	1 set

### Picture of principle of hydraulic pressure

Characteristic of principle of hydraulic pressure

- Adopt import high pressure pump, lower noise, steady pressure
- Dynamical Systems and console integration design, easy to operate, save testing space
- The surface by spray treatment, appearance beautiful

### Main standard accessories:

Upper and lower platen for compression	200x200mm
Extensometer	one set
Round specimen grip for tensile	φ6-φ26mm one set
Flat specimen grip for tensile	0-15mm one set
Bending accessories	one set
High accurate load cell	one set
High precision photoelectric encoder Measuring the displacement	one set
High pressure pump	one set
Proportion Valve	one set
Electro-hydraulic servo valve	one set
Optional accessories Shearing accessories	one set

### Brief introduction STC300 Control System

STC300 all-digital closed-loop control system has many advanced features and technological innovation, mainly reflected in:

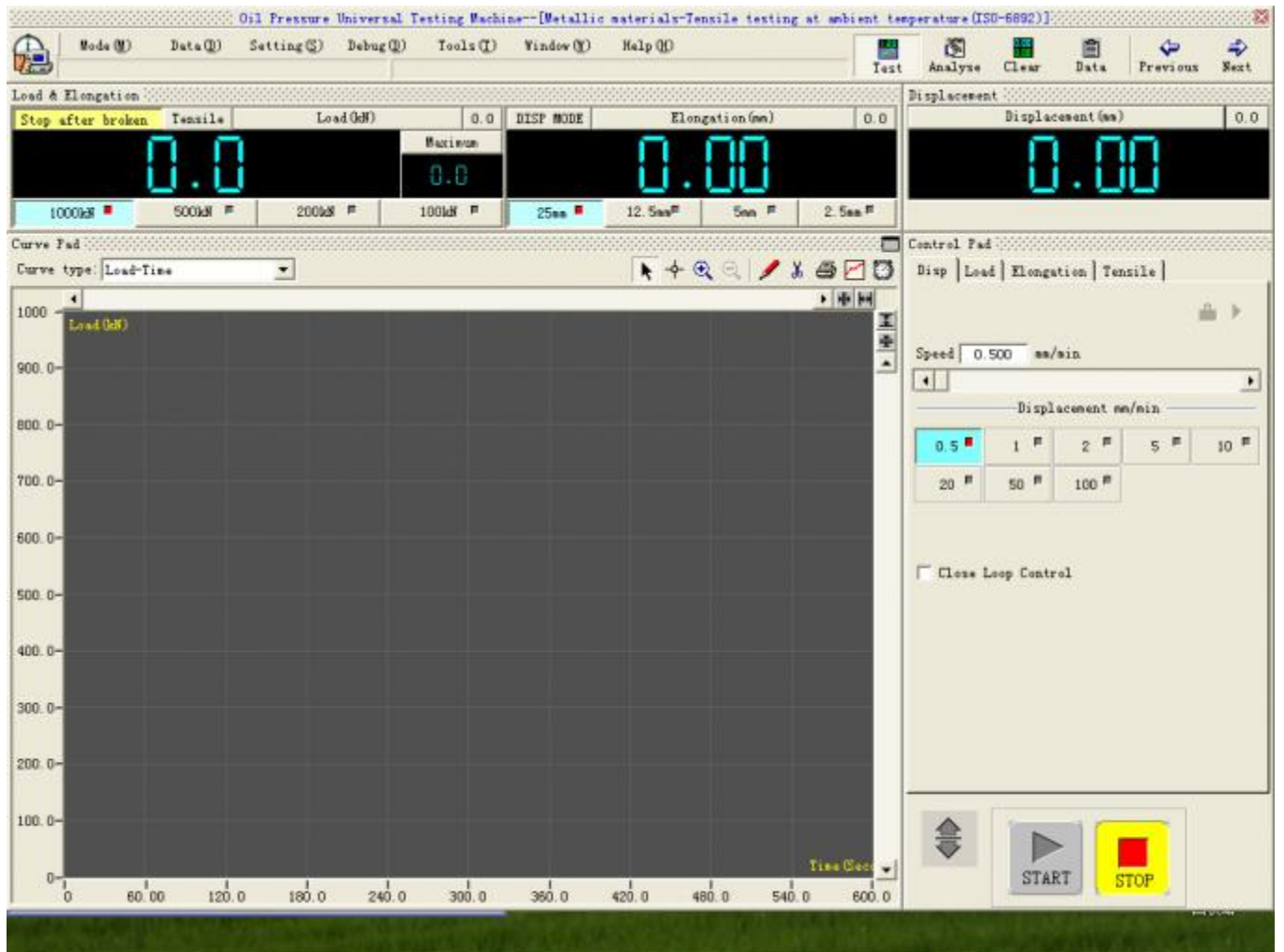
- To achieve the test force, the specimen deformation, piston displacement and testing process, the four closed-loop control ;
- Data acquisition system is composed of 4-way high-precision 24-bit A / D converter channels. The maximum resolution of up to 1 / 300000, full regardless of section ;
- Use BB, AD, Xilinx and other original brand-name integrated device, all-digital design ;
- Meet the PCI standard, computer and installation of automatic identification, ;
- Electronic measurement systems without analog components such as potentiometers to ensure interchangeability for easy maintenance and replacement.

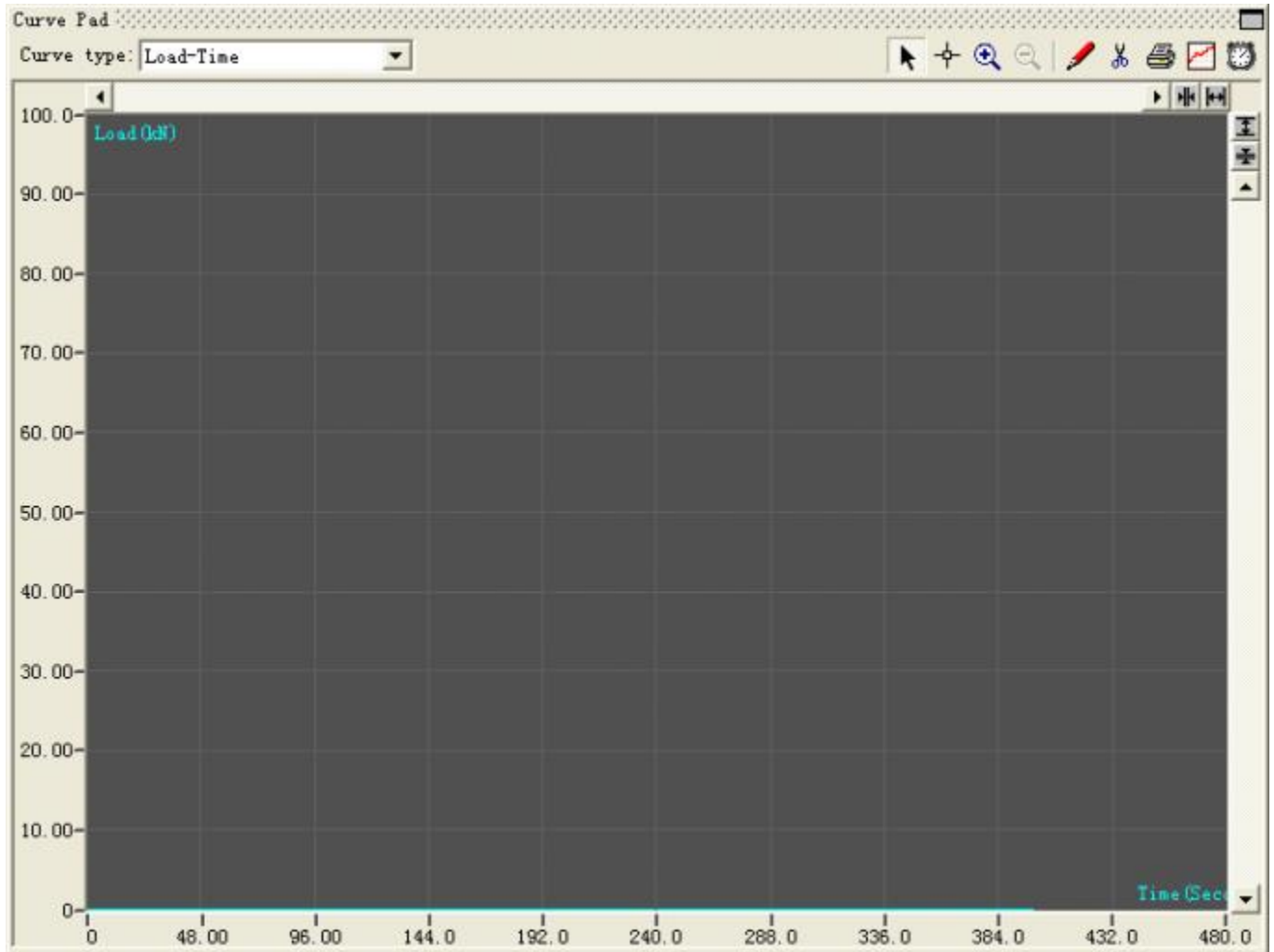
### Brief introduction MaxTest software

MaxTest software In line with GB228-87, GB228-2002 and other relevant provisions of more than 30 national standards

- Computer software system is highly integrated, stable performance, easy to adjust and so on. In real-time experimental data can be collected, the experimental realization of real-time dynamic display characteristic curves, test data files can be used with Access database or SQLserve way to save large databases to facilitate the sharing of resources to achieve customer and network management, and the user's re-analysis. For a variety of user-defined reports word2000, the software can easily access to solve the different users or the same user at different times of the trial reports has different needs problems. The software can handle test force, displacement, time, raw data and the resulting derivative curve..
- Protection function: This machine has two kinds of software and mechanical limit conservation, exceeds the maximum load can be automatically shut down the ratio of dynamic setting; with the over-current, over voltage, overload and other protection functions..
- For the load channels can be automatically labeled and intuitively easy.
- Batch test can achieve the curves at different levels show.
- The software enables the user to customize the speed settings to adjust the speed of the computer. Can also achieve high-precision calibration of the speed at any time adjust the speed of section and coding .
- Monitoring the testing process: the course of the experiment the test force, displacement, curves and other parameters can be realized real-time display .
- Software rights management features classification: In order to improve software and data security, the software can set different passwords to protect data.
- The results reproduce features: the coexistence of trial operation is complete, after-hours, according to user needs at any time in the future to open and re-analysis of test data.
- According to the user can choose load ~ time , load ~ displacement ,displacement ~ time curve to carry out testing and data display, storage, analysis and printing.
- Curve point by point traversal function: by mouse click on the force and deformation curves of the value of each point in order to achieve a variety of parameters..
- The comparison function: You can simultaneously observe the number of experimental curves, multiple curves can be superimposed, local amplification to achieve the characteristics of the sample to be analysis.
- Power Interface: Force-channel interface and test software according to user needs with a variety of sensors, and can be calibrated, modify parameters and the normal test.
- Data sampling frequency: You can choose according to the user test requirements of high-speed sampling frequency.

### **Picture of software**





Related products:	
<u>HD-609/604</u>	<u>2000 kg (20KN)Max. Force / for Tape, rubber, plastic, textile, waterproof material, wire and cable, net rope, wire, metal rod, fiber, metal chain, metal plate and other materials</u>
<u>HD-611</u>	<u>10T (100KN) Max. Force / for waterproof material, wire and cable, net rope, wire, metal rod, fiber, metal chain, metal plate and other materials</u>
<u>HD-615</u>	<u>5000 kg (50KN) Max. Force / for textile, waterproof material, wire and cable, net rope, wire, metal rod, fiber, metal chain, metal plate and other materials</u>
<u>HD-B616</u>	<u>20KN-1000KN (Hydraulic) load range / for waterproof material, wire and cable, net rope, wire, metal rod, fiber, metal chain, metal plate and other materials</u>