



HAIYOU DA

Temperature and Humidity Test Chamber



Email: eric@qc-test.cn

Office: +86 (0)769 8122 0580

Temperature Humidity Test Chambers

Temperature and humidity test chambers are available as standard products in a variety of sizes to suit your needs. Our environmental test chambers are often used for steady-state stability testing, basic temperature cycling and accelerated stress testing.

With standard sizes ranging from 100L to 1000L, HUD series test chambers meet common temperature and humidity testing needs. For more advanced test requirements, may be custom-designed to meet specific test applications, including combined environmental and climatic variables.

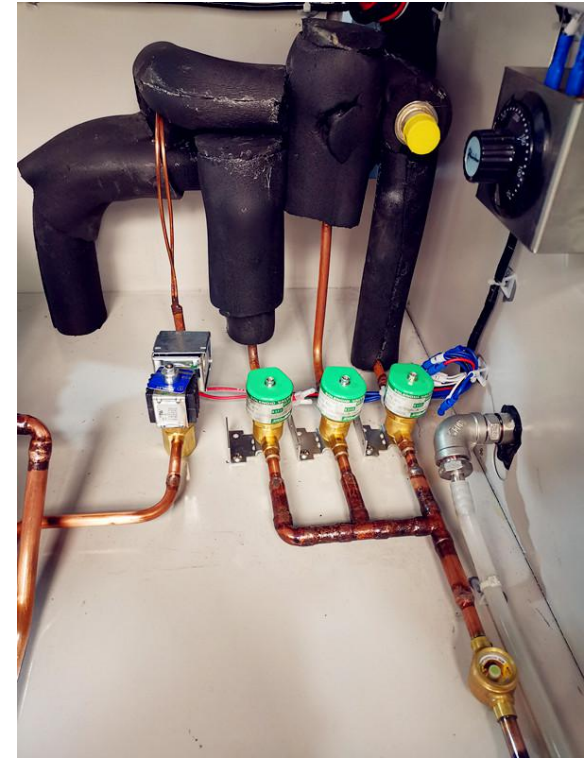
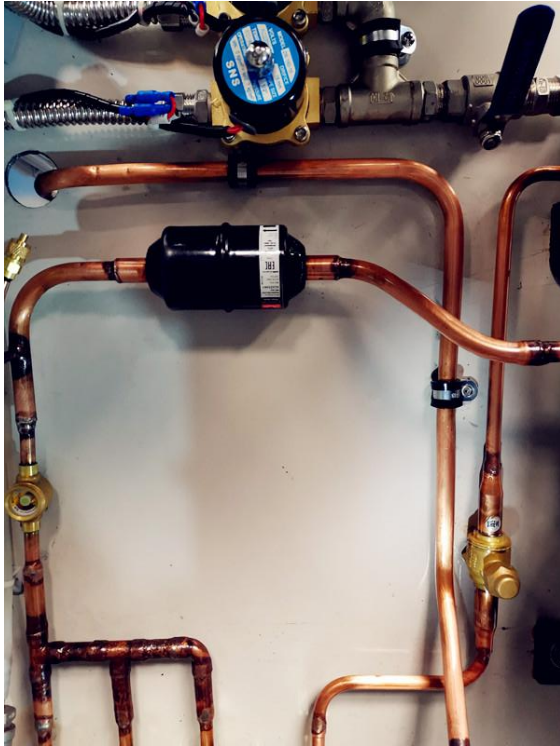
Features:

1. 7" TFT color touch screen controller, PID adjustment with auto-tuning function.
2. No cooling during heating, no heating during cooling, by the cooling balance method can reduce the consumption of compressor and heating system, and theoretically can save 20% or more energy at low temperature;
3. All refrigerants are all environmentally that meet international environmental protection requirements.
4. Main refrigeration accessories are internationally renowned brands, such as: France Tecumseh compressors, Denmark DANFOSS pressure controller, thermal expansion valve, sight glass, American EMERSON oil separator, drying filter, American EMERSON or Italian CASTEL solenoid valve, Shut-off valves, etc.,
5. Several safety protections ensure compressor, heating system, motor, ect., running normally during testing;
6. With USB or RS 232 interface, can output test results, and connect to PC;
7. Vibration damping springs and rubber pads are installed at the bottom of the compressor to reduce the transmission of vibration and noise.

Technical parameters:

Model	HUD-E702-100	HUD-E702-150	HUD-E702-225	HUD-E702-408	HUD-E702-800	HUD-E702-1000
Internal dimension (W*H*D)mm	400*500*400	500*600*500	500*750*600	600*850*800	1000*1000*800	1000*1000*1000
Capacity	100L	150L	225L	408L	800L	1000L
Temperature range	-20 °C,-40°C, -70°C~150°C					
Voltage (V)	3 phase,AC380V,50Hz	3 phase,AC380V,50Hz	3 phase,AC380V,50Hz	3 phase,AC380V,50Hz	3 phase,AC380V,50Hz	3 phase,AC380V,50Hz
Total power (KW)	6KW	7KW	7KW	8KW	9KW	10KW
External dimension (W*H*D) mm	740*1700*1380	870*1800*1430	870*1890*1530	1070*1900*1630	1240*1970*2030	1240*1970*2230
Temperature fluctuations	±0.5°C (without loading)					
Temperature deviation	≤±2°C					
Humidity range	20%~98%					
Humidity fluctuations	≤2.5%					
Humidity deviation	Humidity≥75%RH :≤±3%RH; Humidity≤75%RH: ≤±5%RH					
Heating rate	≤3 °C/min					
Cooling rate	≤1 °C/min					

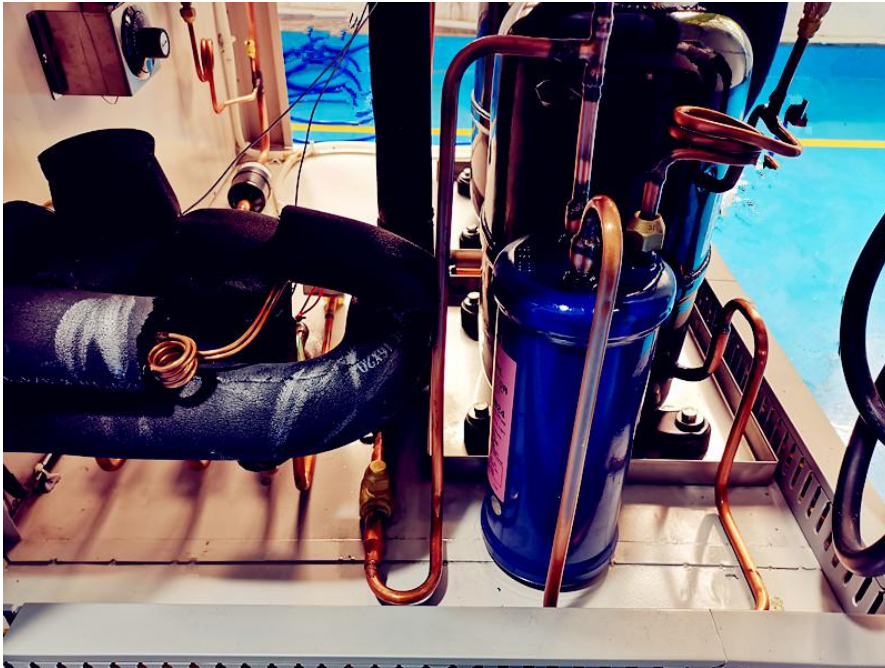
Machine photos:



Email: eric@qc-test.cn

Office: +86 (0)769 8122 0580

Machine photos:



Email: eric@qc-test.cn

7

Office: +86 (0)769 8122 0580

