



amera

(/)

EN

[home \(/\)](#) > [Product \(/products.html\)](#) > [Industrial Thermography \(/Thermography.html\)](#) > [AT31F \(/\)](#)

[C200 \(/C200-Thermal-Camera.html\)](#) [P200 \(/p200.html\)](#) [M200A \(/M200A.html\)](#) [C200Pro \(/C200Pro.html\)](#) [M300 \(/M300-Thermal-Camera.html\)](#) [M600 \(/M600.html\)](#)

[A8 \(/A8thermalcamera.html\)](#) [AT20 \(/AT20.html\)](#) [AT31/61 \(/AT31.html\)](#) [AT31F/61F \(/AT31F.html\)](#) [AT31U \(/AT31U.html\)](#)

AT Series Fixed Focusing Online Temperature Measurement Thermal Camera

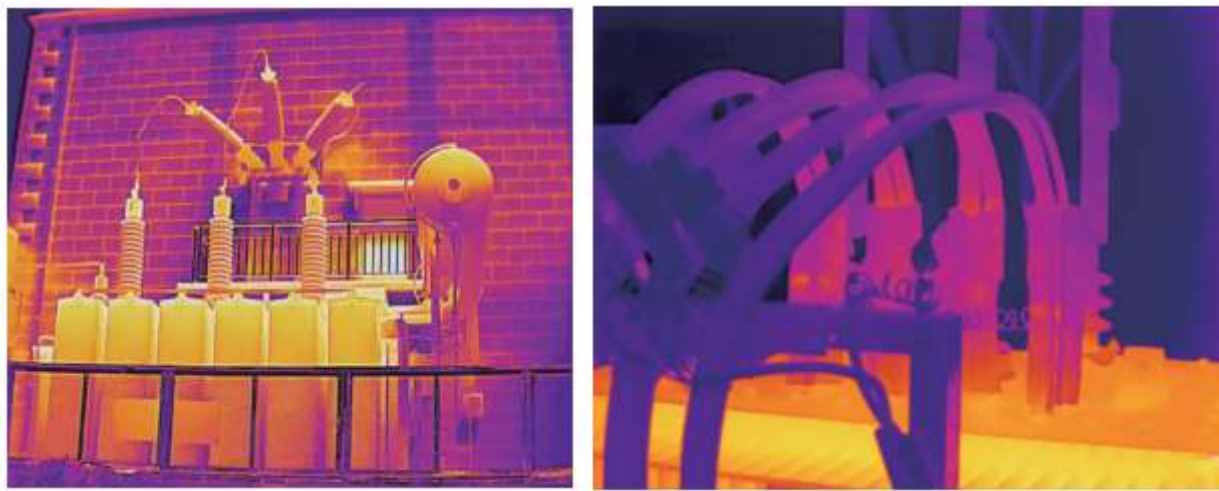


AT31F/61F adopts a high-performance VOx detector with high resolution and high sensitivity. Combined with the Matrix III patented image algorithm, it provides clearer images and more temperature details. Its patented intelligent temperature measurement algorithm makes the results more accurate and reliable. Thanks to its characteristics, such as low power consumption, small size, short start-up time, it is professional, simple, and easy to use with its comprehensive analysis software.

1.Excellent configuration,more usable than ever

It is specially optimized for network. One or multiple cameras can be controlled at the same time with our professional PC software, reducing the application cost. It provides lenses of various optional focal lengths. It can output high-quality infrared images and meet the detecting requirements for space-restricted areas and small targets.

-20°C~+550°C wide range temperature measurement makes it possible to monitor more industrial targets requiring high-temperature measurement.



2.Dedicated support, work together to form your exclusive advantage

Provide Windows/Linux/Android SDK to support users' secondary development and improve practicality to form customer advantages.

Displaying more point, line, and area test results provides an easier way for obtaining back-end temperature data and makes the application more flexible and convenient, reducing the cost of use.

Support alarm function and provide abnormal alarm (I/O output, log, image storage, file sending (FTP), E-mail (SMTP));

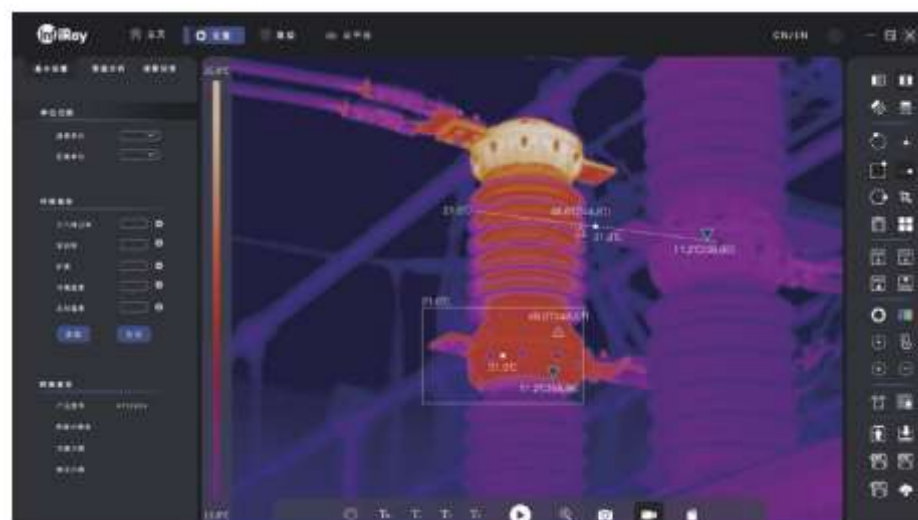


3.Advanced interface, powerful and versatile

50Hz frame rate and Gigabit/Mbit/adaptive Ethernet interface support real-time transmission of on-site temperature data.

Rich back-end interfaces can be directly connected to various monitoring systems for integration programs, greatly reducing the R&D cycle.

Multiple network protocols, such as TCP, UDP, ICMP, and DHCP, can achieve real-time temperature monitoring and abnormal warning. Compatible with protocols, such as ONVIF and GB28181, it can provide convenience for on-site installation and share analysis and alarm results easily at the same time.



Application Fields



Industrial process control



Quality test



Equipment condition monitoring



Fire warning



R&D test and evaluation

Camera Model	AT61F	AT31F
Detector Parameters		
Detector Type	VOx uncooled infrared FPA detector	
Resolution	640×512	384×288
Pixel Pitch	12μm	17μm
Spectral Band	8~14μm	
NETD	<50mk @25°C,F1.0(<40mK Optional)	
Frame Rate	50Hz	
Image Adjustment		
Polarity	Black hot/White hot	
Palette	Support 18 palettes	
Temperature Measurement Performance		
Measuring Range	-20°C~+150°C, 0°C~+550°C	
High and low gain mode	High gain mode, low gain mode, and two modes automatic switching	
Temperature Measurement Accuracy	±2°C or ±2% of the reading (the larger one shall prevail) @Environment Temperature -20°C~60°C	
Power		
Power Supply Range	9~26V DC	
Power Protection	reverse connection protection	
Typical Power Consumption@25°C	<3W	
Interface		
Analog Video Output	1 channel video	
Network Interface	RJ45 10M/100M/1000M self-adapted	
Alarm Interface	1 input, 1 output	
Network Protocol	Ethernet/IP, TCP, UDP, SNTP, RTSP, HTTP, ICMP, SMTP, DHCP, UPnP, PPPOE	
Ethernet Interface Protocol	Control and transmit images	
Serial	Support customized ONVIF, GB28181	

Communication Interface	Customizable RS-485, RS-232
Compression Standard	
Video Compression Standard	H.264/H.265
Video Format	mp4, mov
Alarm	
Alarm Function	All temperature measurement points, the highest temperature, lowest temperature and average temperature in all temperature measurement areas can be configured with separate alarm outputs
Alarm Output	I/O output, log, save image, file sending (FTP), email (SMTP), notification
Physical Characteristics	
Weight (without lens)	<150g
Dimension (without lens)	46.5×48×83 (mm)
Environment Adaptability	
Operating Temperature	-20°C~+60°C
Storage Temperature	-40°C~+70°C
Humidity	5~95%, non-condensing
Software Support	
SDK	Provide Windows / Linux SDK and instruction
PC Software	B/S with browser analysis configuration; C/S with PC&Android temperature analysis software and network monitoring software
Accessories	
Accessories	Interface cable
Resolution	384×288
Lens(mm)	4, 6.2, 9.7, 13, 19, 25, 35, 50
FOV(H×V)	90.3°×60.7°, 61.5°×45.7°, 37.9°×28.7°, 20.1°×15.1°, 19.5°×14.7°, 14.9°×11.2°, 10.6°×8°, 7.4°×5.6°
I FOV	4.250mrad, 2.742mrad, 1.753mrad, 1.308mrad, 0.895mrad, 0.680mrad, 0.486mrad, 0.340mrad

Resolution	640×512
Lens(mm)	4.1, 5.8, 9.1, 13, 19, 25, 35, 55
FOV(H×V)	89°×75°, 70°×57°, 48°×38°, 33°×26°, 22°×18°, 17°×14°, 12.5°×10°, 8°×6.4°
IFOV	2.92mrad, 2.06mrad, 1.31mrad, 0.92mrad, 0.63mrad, 0.48mrad, 0.34mrad, 0.21 mrad

Product consulting

* Message contents :

Please enter your message contents

Mobile phone :

Please enter your mobile phone number

* Country :

Please enter your country

* Product :

Please enter the product you wan

E-mail :

Please enter your E-mail

Submit

CONTACT US

[\(/contact.html\)](/contact.html)

Marketing Dept.Email:sales@infray.com

HR Email:hr01@infray.com

Sales Hotline:+86-400-998-3088 (tel:+86-400-998-3088)

After sales hotline:+86-400-883-0800 (tel:+86-535-3410669)

Address:11th Guiyang Street, YEDA,Yantai 264006,P.R.China

IMAGERS

[Thermal Monocular \(/eyethermalmonocular.html\)](/eyethermalmonocular.html)

[Phone Thermal Camera \(/T2thermalcamera.html\)](/T2thermalcamera.html)

[Car Thermal Camera \(/AsensMthermalcamera.html\)](/AsensMthermalcamera.html)

[Clip on Thermal Scope \(/clipcthermalscope.html\)](/clipcthermalscope.html)

[Rico Thermal Scope \(/Rico.html\)](/Rico.html)

[Tube Thermal Scope \(/Tube.html\)](/Tube.html)

[Dual spectrum thermal imager \(/xfusethermalimager.html\)](/xfusethermalimager.html)

[online monitring thermal camera \(/A8thermalcamera.html\)](/A8thermalcamera.html)

MODULES

[Micro III Thermal Imaging Module \(/Micro3thermalmodule.html\)](/Micro3thermalmodule.html)

[Mini Thermal Imaging Module \(/Mini.html\)](/Mini.html)

[LT Temperature Measurement Module \(/LTthermalmodule.html\)](/LTthermalmodule.html)

[FT Alarming Thermal Imaging Module \(/FTthermalmodule.html\)](/FTthermalmodule.html)

APPLICATIONS

Infrared Thermography (/gycw.html)

Security Thermal Camera (/aqjk.html)

Night Vision (/hwyd.html)

UAV Thermal Module (/wrjzh.html)

Smart Phone (/zhsh.html)

Automotive Thermal Camera (/qcys.html)

Follow Us:

(<https://www.facebook.com/InfiRayHQ>)

(https://www.instagram.com/infiray_technology/)

(<https://iraytek.en.alibaba.com/index.html>)

(<https://www.linkedin.com/company/22301729/>)

(https://www.youtube.com/channel/UC6_A8T1QPf07hciH71s7Ug)

(<https://twitter.com/InfiRay>)

