

Main Specifications

	Model	P200	
Detector	Focal plane array/Spectral range	Uncooled FPA microbolometer (VOx)/8-14μm	
	Pixel pitch	12 μm	
Imaging and optical data	Infrared resolution	256x192 pixels	
	NETD	≤0.04°C@30°C (≤40mk)	
	FOV	56°×42°	
	Focal length	3.2mm	
	Spatial resolution/IFOV	3.75mrad	
	Focus	Focus-free	
	f number	1.1	
	Image frequency	25Hz	
	Digital zoom	2x, 4x	
	Image presentation	Resolution	1920x1080 pixels, CMOS
Visual camera		2 Megapixels	
Screen		3.5 inch touch screen, 960x640	
Color palette		7 color palettes (white hot black hot iron lava rainbow rainbowHC RdGy)	
Image mode		IR/Visual/PIP/Fusion	
Fill-in LED		available	
Measurement analysis		Temperature Range	-20°C- +550°C
	Accuracy	±2°C or ±2% (of reading, whichever is greater)	
	Measurement mode	Central spot (for full frame), hot spot, cold spot	
	Spotmeter	10 in live mode	
	Line	10 in live mode	
	Area	10 in live mode	
	Automatic hot/cold detection	Automatic maximum/minimum markers within area	
	Temperature alarm	Full frame high/low temperature alarm	
	Alarm mode	Image alarm	
	Auto/timed photograph	Support auto photograph when trigger alarm and timed photograph, photo numbers and time interval can be set	
	Video streaming	Real-time radiometric infrared-video streaming over UVC	
	Settings	Data/time, °C/°F/K, language (12, English/Russian/ Polish/German/French/Korean/Portuguese/Spanish/Hungarian/Italian/Turkish/Traditional_Chinese)	
	Emissivity correction	Variable from 0.01 to 1.0 (increment: 0.01)	
	Atmospheric transmissivity adjustment	Object distance setting (0.5-4m, step size 0.25m); Ambient temperature(adjustable, -10°C~+50°C, step size 1°C)	
	Storage	Memory card	Built-in 16G Micro SD card
		File format - thermal	JPG, with original temperature data
		File format - visual	JPG, without temperature data
Image naming		Support automatic naming/text input/naming through QR code scanning	
Voice annotation		voice recording (unlimited time), stored with images (microphone built-in)	
Text annotation		available	
Power supply	Interface	USB Type C direct-charging	
	Battery Operation time	About 6 hours continuous operation	
	Charging time	About 3 hours	
	Power management	Auto shut-down (5 min, 10 min, 20 min)	
Environment	Working temp.	-10°C-+50°C	
	Storage temp.	-20°C~+70°C	
	Humidity	≤95% (Non-condensing)	
	Encapsulation	IP54(IEC 60529)	
	Drop resistance	2m	
	Wifi	available	
Dimension/Weight	Weight	210g	
	Dimension	142mm×76mm×19mm	
	Tripod	1/4"-20-UNC	
Interface	Power input	DC 5V	
	Accessories	Strap, portable bag, USB cable, user manual	



IRay Technology Co., Ltd.

Tel: +86-400-998-3088 Web: www.infiray.com
 Add: No. 11, Guiyang Street, YEDA, Yantai 264006, P.R.China
 E-mail: sales@infiray.com Fax: +86-0535-3410604

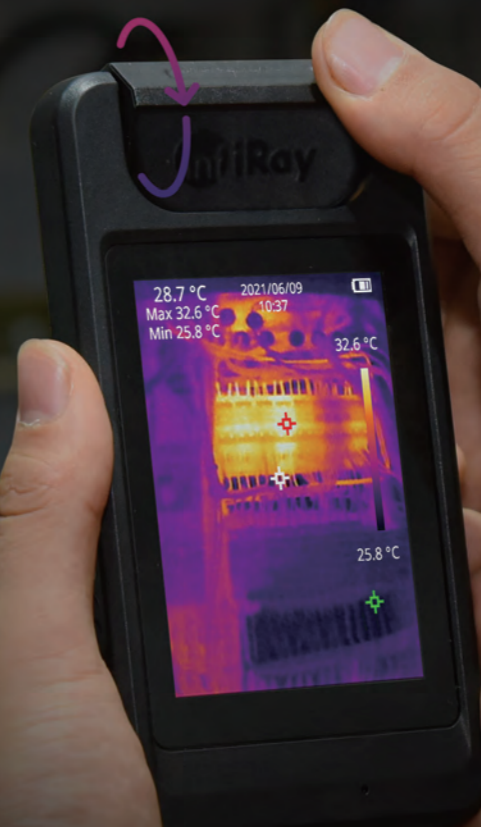
Authorized IRay Distributor:



Tianquan P200

Compact Thermal Camera

Rotate to Unlock Your Thermal Potential





InfiRay P200 Compact Thermal Camera is an ultra-modern thermography tool featuring rotatory lens to provide accurate and intelligent temperature measurement. It is named after the star in the northern circumpolar constellation of Ursa Major - "Megrez". The unique gravity-sensing UI, rotating menu, and 56° large FOV can satisfy the requirements in special spaces. The 256×192 resolution, 3.5-inch touch screen, and 16G internal memory produce smooth intelligent experiences. Benefiting from the self-developed user-friendly InfiRay temperature measurement analysis software, P200 makes infrared data analysis easy and efficient. It can be connected to the cloud through Wi-Fi to achieve real-time data sharing among multiple devices. It also supports real-time image analysis through USB and settable alarm threshold and multi-area flexible alarm on one screen. P200 has become the right-hand assistant for operation and maintenance engineers, HVAC engineers, and equipment inspectors.

01 Rotate: The Vision is Up to You

Free rotating of 90°, for more possibilities

There is no need for user to adapt to the position and angle of the target. With P200 0-90° rotary lens, temperature measurement and inspection have never been so easy and convenient. The gravity-sensing UI can be switched between horizontal and vertical measurement at will. The rotating menu and 56° large FOV are also optimized for wider and taller targets.

No Fear of Tall Targets



Not Awkward for Low Positions



No Difficulty in Narrow Spaces



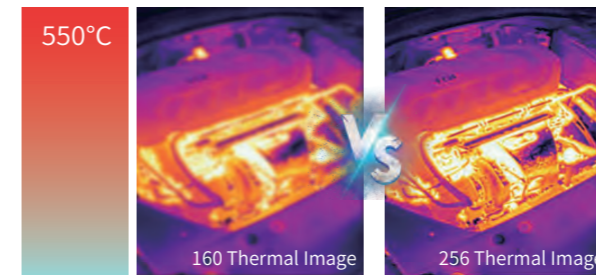
02 Accurate Enough: More Precise and Powerful

One Step Faster to Become the Leader

P200 is embedded with InfiRay self-developed high-sensitivity VOx infrared detector with 256×192 resolution and $\leq 0.04^{\circ}\text{C}$. It can provide extraordinary high-definition thermal images with amazing details, higher temperature accuracy, and better troubleshooting. The frame rate of 25Hz makes imaging more smooth. Everything seems more real.

256×192 Resolution, Clear and Accurate

The resolution of 256×192 reveals more temperature details. The temperature resolution of 0.04°C brings high definition. The measurement range up to 550°C satisfies the requirements of high-temperature targets.



One-Hand Operation

Put the overall situation in your hand. P200 is portable, pick-and-play, and reliable, to improve efficiency continuously.



2,000,000-pixle Visible Light at the Same Time

Infrared module for temperature measurement and daylight module for positioning, with fusion and PIP mode to help fast defect locating and improve inspection efficiency.

56° Large FOV, Efficiently Measurement

Cover ultra-wide area in a glance, providing multiplied inspection efficiency.



LED fill-in light, for all scenarios

6h ultra-long battery life, free you from worries

3.5-inch capacitive touch screen, flexible operations

16G internal memory, storing tens thousands of thermal images

IP54, 2m drop protection

03 Smart enough: Built-in InfiRay Cloud Ecosystem

Benefit Beyond the Screen

Accessing InfiRay Cloud Services through Wi-Fi, Multiple Devices Sharing Data

Collect data here and analyze on the cloud, "once and for all"



Professional Software and Temperature Analysis

InfiRay self-developed user-friendly temperature measurement analysis software displays the temperature of points, lines, and areas directly.



Portable or Fixed? Meet more monitoring and analysis requirement

Support USB plug-and-play analysis, flexible alarm threshold setting, and multi-area real-time alarm on one screen

