

Low consumption,
convenient to integrate,
brilliant moments.

T3 Temperature Measurement
Uncooled Thermal Camera Module



[home](#) > [Product](#) > [Thermal Module](#) > [t3thermalmodule](#)

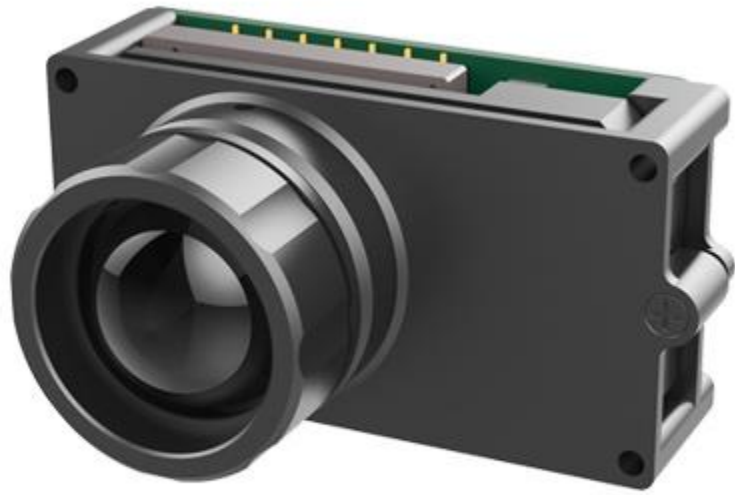
[Micro III](#)[Micro II](#)[LT](#)[FT](#)[XPhoenix](#)[Tiny1](#)[S0](#)[T3](#)

IRay's lowest power consumption high-performance module to date

The T3 series supports full-screen temperature data output of 2.76 million per second. It can bring excellent imaging and realize accurate professional temperature measurement.

Multiple interfaces make it compatible with multiple platforms, easy to be integrated and secondary developed.

The T3 series captures accurate, calibrated, and noncontact temperature data in every pixel of each image.



Traffic Monitoring



Electric Utility Inspection

Model	T3-217	T3-317	T3-612
Resolution	240×180	384×288	640×512
Pixel Pitch	17μm	17μm	12μm
Spectral Band	8~14μm	8~14μm	8~14μm
Frame Rate	25Hz/50Hz	25Hz/50Hz	25Hz/50Hz
NETD	≤60mK@f#1.0	≤60mK@f#1.0	≤60mK@f#1.0
Operating Temperature	-20°C~+60°C	-20°C~+60°C	-20°C~+60°C
Power Supply	3.8V-5.5V DC	3.8V-5.5V DC	3.8V-5.5V DC

Power Consumption	<0.3W*	<0.3W*	<0.5W*
Weight(With Lens)	<30g	<30g	<30g
Size(With Lens)	43.7×22.4×27.6	43.7mm×22.4mm×27.6mm	43.7mm×22.4mm×27.6mm
Data Interface	Parallel interface/USB	Parallel interface/USB	Parallel interface/USB
Communication Interface	SPI/I ² C/UART(USB)	SPI/I2C/USB	SPI/I2C/USB
Image Enhancement	Multi-level DDE	Multi-level DDE	Multi-level DDE
Image Correction	Shutter	Shutter	Shutter
Color Palette	White Hot/Black Hot/Multiple Pseudo Color Options	White Hot/Black Hot/Multiple Pseudo Color Options	White Hot/Black Hot/Multiple Pseudo Color Options
Measuring Range	-20°C~+120°C(Expandable to 600°C)	-20°C~+120°C(Expandable to 600°C)	-20°C~+120°C(Expandable to 600°C)
Measurement Accuracy	±3°C or ±3% of temperature measuring range	±3°C or ±3% of temperature measuring range	±3°C or ±3% of temperature measuring range

Temperature Correction	Manual/Auto	Manual/Auto	Manual/Auto
Temperature Output	Parallel output in real time	Parallel output in real time	Parallel output in real time
Temperature Statistics	Support Max./Min./Temp. Analysis	Support Max./Min./Temp. Analysis	Support Max./Min./Temp. Analysis
Measured under 25Hz parallel output mode			

The data above are for reference only. Specifications in the marketed products shall prevail.



Product consulting

* Message contents :

Mobile phone :

* Country :

* Product :

E-mail :

Submit

CONTACT US

Marketing Dept.Email:sales@infray.com

HR Email:hr01@infray.com

Sales Hotline:+86-400-998-3088

After sales hotline:+86-400-883-0800

Address:11th Guiyang Street, YEDA,Yantai 264006,P.R.China

IMAGERS

Thermal Monocular

Phone Thermal Camera

Car Thermal Camera

Clip on Thermal Scope

Rico Thermal Scope

Tube Thermal Scope

Dual spectrum thermal imager

online monitring thermal camera

MODULES

Micro III Thermal Imaging Module

Mini Thermal Imaging Module

LT Temperature Measurement Module

FT Alarming Thermal Imaging Module

Phoenix Cooled MWIR Imaging Module

APPLICATIONS

Infrared Thermography

Security Thermal Camera

Night Vision

UAV Thermal Module

Smart Phone

Automotive Thermal Camera

Follow Us :



