

# Professional thermometer in the size of two American quarters

T3Pro is leading temperature measurement into a new era with full-screen temperature data output of 2.76 million per second.

It supports accurate temperature measurement of point, line, and surface and can directly generate professional reports and instant cloud analysis.

SDK development kit is also available. The T3Pro helps you find invisible problems faster than ever, whether you're inspecting electrical panels, troubleshooting mechanical systems, looking for HVAC problems, or finding water damage.

The Most Clearest In The World

T3Pro



## 6 Core Technologies

384x288

Ultra Clear

-20~400°C

Accurate Measurement

Lens

Ge Monocrystal

Matrix III

Patented Image Algorithm

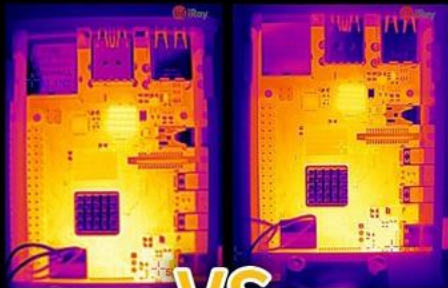
Alloy Body

Strong And Durable

25Hz

Frame Rate

InfiRay VS Other Famous Brands



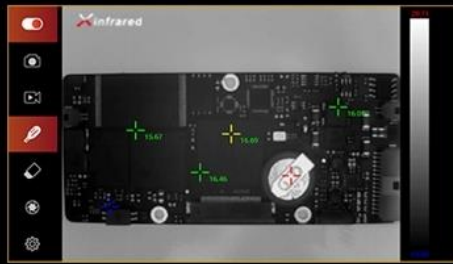
▲ T2L VS ▲ T3S



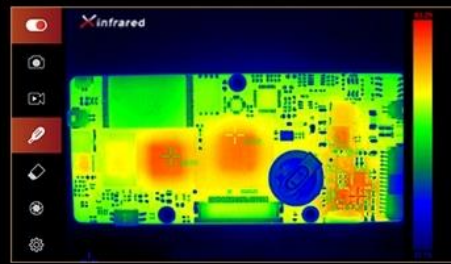
▲ Other Famous Brand 1 VS ▲ Other Famous Brand 2

Model	T2L	T3S /T3Pro	Other Famous Brand 1	Other Famous Brand 2
Thermal Resolution	256 × 192	384 × 288	320 × 240	160 × 120
Frame Rate	25Hz	25Hz	8.7Hz	8.7Hz
NETD	≤60mK	≤60mK	150mK	70mK
Power Supply	Phone		Battery	

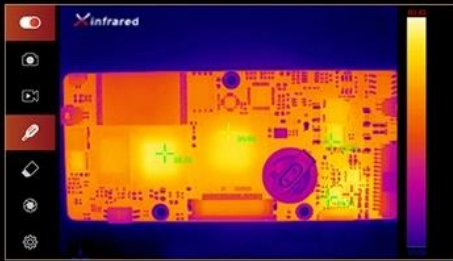
## 4 mode for observation circuit board



White Hot



Rainbow



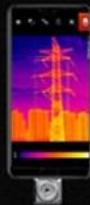
Iron red



Black hot

## Plug and Play

Type-C interface device are supported



Android



Tablet PC



PC

Download and Install

Download the APP we sent to you after purchasing and click to install.



APP Install

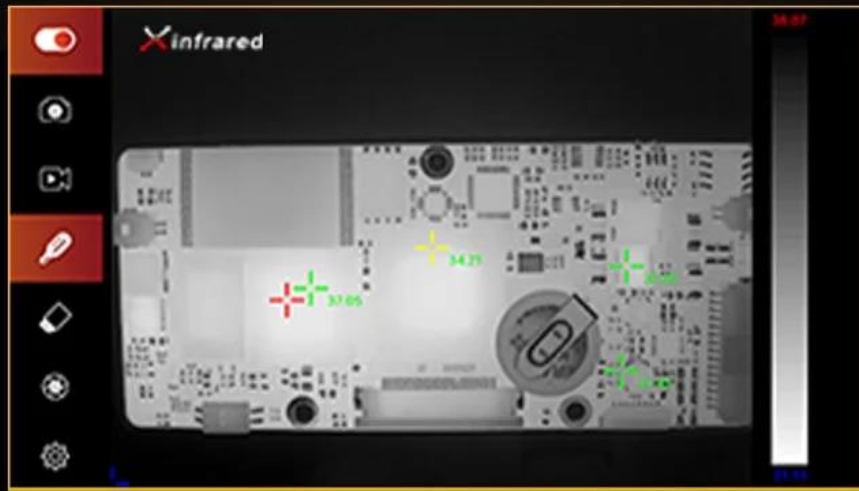
Permit Access

Plug the thermal camera to the phone and click "Yes" on the pop-up.



Open Software





04 black heat - the maximum temperature of the whole board is restored to 38 °C

## Environmental correction



Atmospheric humidity



Reflection temperature



Humidity



Emissivity



Model	T3Pro
Resolution	384×288
Pixel Pitch	17μm
Spectral Band	8~14μm
Objective Lens	13mm
Focusing Mode	Manual
Frame Rate	25Hz
NETD	≤60mK@25°C,f#1.0
MRTD	≤500mK@25°C,f#1.0
Operating Temperature	-10°C~+50°C
Measuring Range	-20°C~+120°C(Support extended range -20°C~400°C)
Measurement Accuracy	±2°C or ±2% of temperature measuring range
Temperature Correction	Manual/Auto
Power Consumption	<0.5W
Weight (with lens)	<40g

Size (with lens)	49.5mm×26mm×27.5mm (13mm Lens)
Phone Compatibility	Android 6.0 and above
Image Enhancement	Digital detail enhancement
Image Correction	Manual
Color Palette	White hot/Black hot/Multiple pseudo color options
SDK Develop	Support
Temperature Statistics	Support Dot/Line/Area Analysis Statistic and Reporting Functions Support Max./Min./Center Temp. Display, with up to Three Points Statistic
Photo&Video	Support
Online Software Update	Support

The data above are for reference only. Specifications in the marketed products shall prevail.

## Product consulting

\* Message contents :



Mobile phone :

\* Country :

\* Product :

E-mail :

Submit

## CONTACT US

Marketing Dept.Email:[sales@infiray.com](mailto:sales@infiray.com)

HR Email:[hr01@infiray.com](mailto:hr01@infiray.com)

Sales Hotline:[+86-400-998-3088](tel:+86-400-998-3088)

After sales hotline:[+86-400-883-0800](tel:+86-400-883-0800)

Address:[11th Guiyang Street, YEDA,Yantai 264006,P.R.China](#)

## IMAGERS

[Thermal Monocular](#)

[Phone Thermal Camera](#)

[Car Thermal Camera](#)

[Clip on Thermal Scope](#)



[Rico Thermal Scope](#)

[Tube Thermal Scope](#)

[Dual spectrum thermal imager](#)

[online monitoring thermal camera](#)

## MODULES

[Micro III Thermal Imaging Module](#)

[Mini Thermal Imaging Module](#)

[LT Temperature Measurement Module](#)

[FT Alarming Thermal Imaging Module](#)

[Phoenix Cooled MWIR Imaging Module](#)

## APPLICATIONS

[Infrared Thermography](#)

[Security Thermal Camera](#)

[Night Vision](#)

[UAV Thermal Module](#)

[Smart Phone](#)

[Automotive Thermal Camera](#)

Follow Us :





Yantai iRay Technology Co., Ltd. Copyright © 2014-2018 all rights reserved | [Privacy Policy](#) | [鲁 ICP 备 18043449 号-3](#)