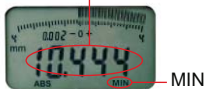


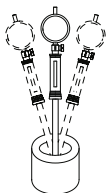
**ATTENTION: NOT SUITABLE
FOR 0.001MM DIAL INDICATORS**

with digital indicator

Read the diameter directly,
after inputting the size of
setting ring.



The minimum value
tracking function can find
the diameter automatically.



2308-10FA

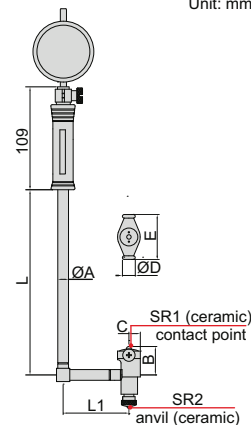
2108-10F



2827-160A

BORE GAGES

Unit: mm



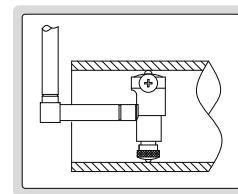
- Optional accessory: setting ring (code **6312**), long handle (code **7351**), bore gage setter

With dial indicator

| Code | Range | Indicator | Accuracy | Repeatability |
|-----------|-----------|---|----------|---------------|
| 2827-60A | 35-60mm | dial indicator code 2308-10FA , range 10mm, graduation 0.01mm | ±0.018mm | 0.003mm |
| 2827-160A | 50-160mm | | ±0.018mm | 0.003mm |
| 2827-250A | 160-250mm | | ±0.018mm | 0.003mm |
| 2827-450A | 250-450mm | | ±0.018mm | 0.003mm |

With digital indicator

| Code | Range | Indicator | Accuracy | Repeatability |
|-----------|-----------|--|----------|---------------|
| 2127-60A | 35-60mm | digital indicator, code 2108-10F , range 12.7mm/0.5", resolution 0.01mm/0.0005" (can switch to: 0.002mm/0.0001") | ±0.018mm | 0.003mm |
| 2127-160A | 50-160mm | | ±0.018mm | 0.003mm |
| 2127-250A | 160-250mm | | ±0.018mm | 0.003mm |
| 2127-450A | 250-450mm | | ±0.018mm | 0.003mm |



| (mm) | | | | | | | |
|-----------|------|------|------|----|-------|-----|------|
| Range | ØA | B | C | ØD | E | L | L1 |
| 35-60mm | 12.8 | 22 | 9 | 13 | 27 | 141 | 75 |
| 50-160mm | 12.8 | 28.5 | 9.2 | 13 | 35 | 141 | 76.2 |
| 160-250mm | 14.5 | 62.0 | 12.7 | 15 | 74.5 | 391 | 100 |
| 250-450mm | 14.5 | 91.5 | 15.0 | 15 | 101.5 | 391 | 100 |