

11

Rotator

Effective mixing of biological samples in a variety of vials.
Ideal for immune precipitations, prevention of blood coagulation,
latex diagnostics etc.



CRT-350

with optional accessories

Optional accessories

- Tube holder set with disk
- Disk for flask clamp
- Erlenmeyer flask clamp holders (disk for flask clamp & flask clamp)
- Post for double stacking

※ Disk, holders, tubes, flasks in above picture are all optional.



Max. mountable tubes when double stacking



Fully adjustable angle



Quick installable and removable disk (optional)

Tube	Quantity (ea)
1.5ml	120
5ml	36
15ml	36
50ml	24



Performance

- Microprocessor PID control.
- Adjustable speed range from 2 to 70 rpm.
- Fully adjustable tilt angle up to 90°
 - Horizontal for minimal mixing and vertical for full end-over-end mixing.
- Digital speed control providing gentle rotating even at low speed.
- Low-profile design with rubber feet for minimal vibration and noise.

Convenience

- Simple fixture of accessories equipped to disk for quick installation and removal.
- Various selection of optional tubes and flask clamp holder disks to accommodate most application.

- Available to rotary maximum 120 test tubes simultaneously with use of two tube holders by optional dual holder accessory.
- Vivid and colorful vacuum fluorescent display (VFD) with touch-sensitive keypad.
- One-touch timer range: 1 min. to 99 hr. 59 min.

Safety

- Stepping motor with self-protection function for advanced durability.
- Self-diagnostic function identifying errors.
- Its polypropylene main body is highly chemical-resistant and easy-to-clean.
- Over-current protection.

Model		CRT-350
Control system		PID feedback control
Display		VFD
Shaking system	Motion type	Orbital
	Speed range (rpm)	2 to 70
	Tilt angle	0 to 90°
	Max. load (kg / lbs)	4 / 8.8
Material	Disk (optional)	Aluminum
	Body	PP (polypropylene)
Dimension	Exterior with disk (optional) (WxDxH) (mm / inch)	320x325x463 / 12.6x12.8x18.2
	Net weight with disk (optional) (kg / lbs)	6.5 / 14.3
Electrical requirements		AC 100 to 240 V, 50/60 Hz
Cat. No.	KR plug	AAH3E115K
	US plug	AAH3E115U

※ Permissible environmental conditions: temperature (5-40°C) and relative humidity (up to 80%).

Tube holder set with disk

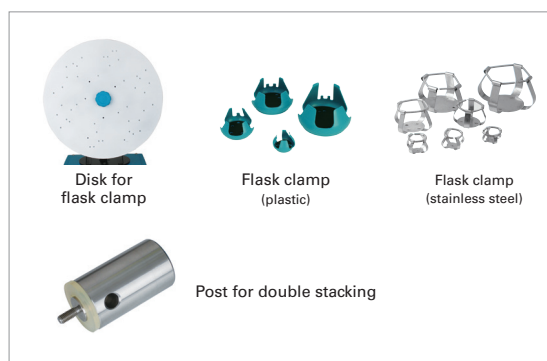
Description	Max. mountable tube	Cat. No.
1.5ml (Ø10mm / Ø0.39")	60	AAA3E501
5ml (Ø12mm / Ø0.47")	18	AAA3E502
15ml (Ø16.5mm / Ø0.65")	18	AAA3E503
50ml (Ø29mm / Ø1.14")	12	AAA3E504



Tube holder set with disk (1.5ml / 5ml / 15ml / 50ml)

Erlenmeyer flask clamp holders

Description	Max. mountable tube		Cat. No.
Disk for flask clamp	N/A		AAA3E511
Flask clamp (stainless steel)	50ml	13	AAA23550
	100ml	8	AAA23551
	300ml	6	AAA23556
Flask clamp (plastic)	50ml	13	AAA30570
	100ml to 125ml	8	AAA30571
	300ml	6	AAA30574



Post for double stacking

Description	Cat. No.
Post	AAA3E521