

Technical Parameter



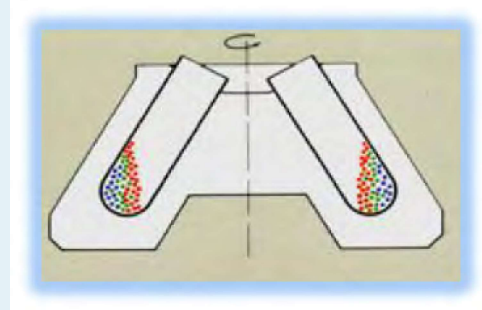
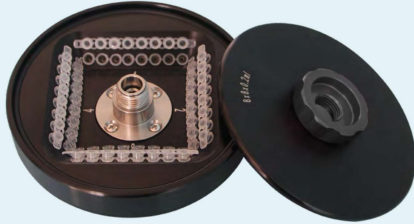
Model	GTR116C
Max Speed	16500rpm
Max RCF	21615 × g
Max Capacity	12 × 5ml
Timer	1s ~ 99min59s
Revolutions/min	± 10r/min
Temp Range	-20°C ~ 40°C
Temp Accuracy	± 1.0°C
Voltage	AC 220 ± 22V 50Hz 10A
Power	550W
Noise Level	≤ 60dB (A)
Size	460 × 335 × 330 (mm)
Net Weight	48kg
Rotor automatic recognition	无

Product Features

- ◆ Up to 10 level deceleration and acceleration control with 40 sets program groups.
- ◆ With over speed, imbalance, door cover protection, over current, rotor fault etc protection.
- ◆ Microcomputer control with HD LCD display, driven by AC frequency conversion motor.
- ◆ Steel Structure, centrifuge chamber made of stainless steel with Environmentally friendly anti-corrosion coating treatment and low noise.
- ◆ Food grade silicone integrated seal ring, high temperature resistance and corrosion resistance.
- ◆ Imported energy-efficient ECO friendly refrigeration system.

Angle Rotor

- » When the angle rotor is running, the centrifuge container and the rotating shaft form a fixed angle, and the sample is deposited at the bottom of the centrifuge tube and the side wall near the bottom.



Rotor Parameters

Rotor NO.	Rotor Pictures	Rotor Capacity (ml)	Max Speed (r/min)	Max RCF (×g)
Angle Rotor				
1		16 × 1.5/2.0ml	16500rpm	20880 × g
2		12 × 5ml	15000rpm	18036 × g
3		24 × 1.5/2.0ml	15000rpm	21615 × g
4		4 × 8 × 0.2ml PCR Row	15000rpm	14866 × g
5		8 × 8 × 0.2ml PCR Row	14000rpm	15032 × g
6		Capillary rotor 24 hole	12000rpm	13845 × g