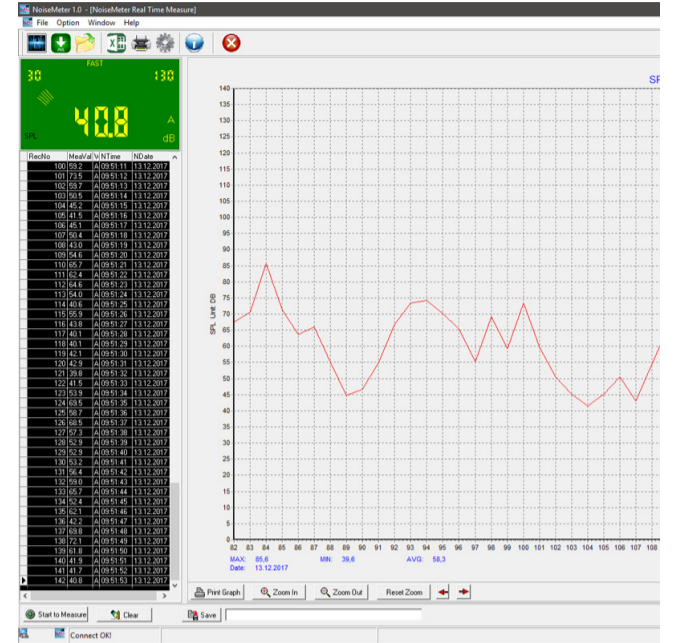


Sound Sensor PCE-SLM 10



Sound sensor PCE-SLM 10

dB display with 75 mm digit height / 30 ... 130 dBA measuring range / LED display / Wall mounting / Integrated condenser microphone

The dB display PCE-SLM 10 is suitable for the continuous measurement and visualization of the sound pressure level. The PCE-SLM 10 dB display is used in schools, open-plan offices, bars, clubs and other event venues. Due to the large digits of the dB display, the measured value is always easy to read. Due to the LED display, this is also possible in dark environments without any problems. The dB display is powered by USB with the optional AC adapter or external battery pack.

The measuring range of the dB display ranges from 30 ... 130 dB. The sound level meter displays the measured value A weighted. The time weighting of the dB display is always Fast. The frequency range of the 6 mm condenser microphone ranges from 31.5 Hz to 8.5 kHz. The dB interface can be connected to the PC via the USB interface. The software can be used to transmit live measurements to a computer. The dB display also has an internal memory, which can be read out with the software.

- ▶ 75 mm / 3 in digit height
- ▶ 30 ... 130 dBA measuring range
- ▶ 0.1 dB or 1 dB resolution
- ▶ Wall mounting
- ▶ Operation via micro USB socket
- ▶ Alarm function
- ▶ For offices, schools, event rooms
- ▶ Memory for 657,000 readings

Specifications

Measuring range	30 ... 130 dBA
Measurement accuracy	± 1.5 dBA (at 94 dB / 1 KHz)
Resolution	0.1 dB (<100 dB) 1 dB (> 100 dB)
Frequency range	31.5 Hz ... 8.5 kHz
Frequency	A
Time weighting	Fast
Microphone type	6 mm condenser microphone
Display	3 digit LED display
Character height	75 mm / 3 in
Interface	USB
Storage	657,000 readings
Power supply	5V / 1 A via USB socket
Mounting option	Wall mounting via housing tabs Tripod mounting with integrated tripod thread
Operating conditions	0 ... 40°C / 32 ... 104°F, 10 ... 80% rh
Storage conditions	-10 ... 60°C / 14 ... 140°F, 10 ... 70% rh
Dimensions	210 x 130 x 28 mm / 8.3 x 5.1 x 1.1 in
Weight	About 453 g / 1 lb

More information

Manual



More product info



Similar products



Subject to change