

# Products for Industry

Dry Sterilizer (Laboratory use)

## SK601

Item Code : 212910

Model : SK601

[Page Top](#)[Product Summary](#)[Specifications](#)[Optional items](#)[Same series products](#)

## Dry Sterilizer (Laboratory use) (SK601)

[Contact Us](#)[Printing](#)

## Product Summary

**Dry heat sterilization with independent overheat prevention device**

### Features of Dry Sterilizer (Laboratory use) (SK601)

#### Features

- Programmable
- High precision controller with improved display visibility and operability
- Standard equipped with calibration offset, lock function, power recovery mode, power on and operation time accumulation, calendar time, accumulation power consumption monitoring, total CO2 emission, and heat output, save and access operator setting information
- Maximum 99 steps, 99 patterns, repeat operation

- Easy sample data collection with cable port

### Safety features

Standard equipped with self diagnostic functions, independent overheat prevention device and earth leakage breaker

## Specifications

### Specifications

<b>Item Code</b>	<b>212910</b>
<b>Model</b>	<b>SK601</b>
<b>Circulation method</b>	Natural convection
<b>Temp. setting range</b>	Room temp. +5~260°C
<b>Temp. control accuracy</b>	±1°C (at 260°C) JTM K05
<b>Temp. fluctuation</b>	3°C (at 260°C) JIS
<b>Temp. rising time</b>	Approx. 60min.
<b>Interior / Exterior material</b>	Stainless Steel / Chrome free electrogalvanized carbon steel sheet coated with chemical-proof baked-on finish
<b>Insulation Material</b>	Glass wool
<b>Heater</b>	SUS 1.36kW
<b>Sensor</b>	K type Thermocouple
<b>Fan type / Fan motor</b>	—
<b>Cable port</b>	I.D. 33mm (right side)
<b>Exhaust port</b>	I.D. 33mm×2 (on top)
<b>Temperature control</b>	PID control by microprocessor
<b>Temperature display</b>	Temp. display: Green 4-digit LED digital display (increment: 1°C)
<b>Timer</b>	0 min~99 hrs 59 min (increment: 1 min. or 1 hr.)
<b>Operation function</b>	Fixed temperature, Auto start, Auto stop, Quick auto stop, Program (99 steps, 99 patterns, Repeat operation function)
<b>Additional function</b>	Power on and operation time accumulation function (up to 65535 hours), Calendar time (24 hours), Calibration offset,
<b>Safety device</b>	Self-diagnostic functions (Sensor failure, SSR short circuit, Heater failure, Main relay contact failure, Automatic overheat prevention),
<b>Internal dimensions (W×D×H mm)</b>	600×540×500mm
<b>External dimensions (W×D×H mm)</b>	710×650×870mm
<b>Remarks(dimensions)</b>	Internal capacity 162L
<b>Power Source</b>	AC115V / 220VV
<b>Weight</b>	62kg

## Maintenance and warranty

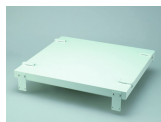
---

Conditions: temperature and humidity: 23 deg.C+/-5 deg.C, 65%RH+/-20% (no load)

External dimensions do not include protrusions.

---

## Optional items



Stacking support (OD60)



Cable port (ODK32)



Cable port (ODK34)



---

## Same series products



Dry Sterilizer (Laboratory use)  
(SK401)



Dry Sterilizer (Laboratory use)  
(SK801)



Dry Sterilizer (Laboratory use)  
(SK811)